

## Anti-Secretogranin II/SCG2 Antibody

Catalog Number: A04779-2

### About SCG2

The protein encoded by this gene is a member of the chromogranin/secretogranin family of neuroendocrine secretory proteins. Studies in rodents suggest that the full-length protein, secretogranin II, is involved in the packaging or sorting of peptide hormones and neuropeptides into secretory vesicles. The full-length protein is cleaved to produce the active peptide secretoneurin, which exerts chemotaxic effects on specific cell types, and EM66, whose function is unknown.

### Overview

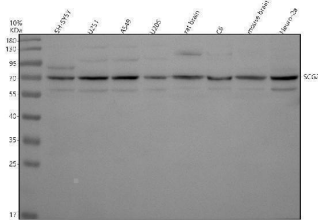
|                      |  |
|----------------------|--|
| Product Name         | Anti-Secretogranin II/SCG2 Antibody  |
| Reactive Species     | Human, Mouse, Rat  |
| Description          | Boster Bio Anti-Secretogranin II/SCG2 Antibody catalog # A04779-2. Tested in WB, IHC, ICC/IF, ELISA applications. This antibody reacts with Human, Mouse, Rat.   |
| Application          | ELISA, IF, IHC, ICC, WB  |
| Clonality            | Polyclonal   |
| Formulation          | 500 ug/ml antibody with PBS, 0.02% NaN <sub>3</sub> , 1 mg stabilizing protein and 50% glycerol<br>*This antibody is supplied in a stabilized formulation.<br>Compatibility with conjugation reactions depends on the chemistry of the conjugation method used. For conjugation methods that are not compatible with the stabilizing components present in this formulation, a carrier-free antibody format is required. |
| Storage Instructions | 12 months from date of receipt at -20°C as supplied. 6 months 2 to 8°C after reconstitution. Avoid repeated freezing and thawing.  |
| Host                 | Rabbit   |
| Uniprot ID           | P13521   |

### Technical Details

|                     |   |
|---------------------|---|
| Immunogen           | E.coli-derived human SCG2 recombinant protein (Position: 420-614).  |
| Form                | Liquid  |
| Concentration       | 500 ug/ml   |
| Purification        | Immunogen affinity purified.  |
| Suggested Dilutions | Western blot, 1:500-2000<br>Immunohistochemistry, 1:50-400<br>Immunocytochemistry/Immunofluorescence, 1:50-400<br>ELISA, 1:100-1000 |



## Anti-Secretogranin II/SCG2 Antibody (A04779-2) Images



Western blot analysis of Secretogranin II/SCG2 using anti-Secretogranin II/SCG2 antibody (A04779-2). Electrophoresis was performed on a 10% SDS-PAGE gel at 80V (Stacking gel) / 120V (Resolving gel) for 2 hours. The sample well of each lane was loaded with 30 ug of sample under reducing conditions. Lane 1: human SH-SY5Y whole cell lysates, Lane 2: human U251 whole cell lysates, Lane 3: human A549 whole cell lysates, Lane 4: human U20S whole cell lysates, Lane 5: rat brain tissue lysates, Lane 6: rat C6 whole cell lysates, Lane 7: mouse brain tissue lysates, Lane 8: mouse Neuro-2a whole cell lysates. After electrophoresis, proteins were transferred to a nitrocellulose membrane at 150 mA for 50-90 minutes. Blocked the membrane with 5% non-fat milk/TBS for 1.5 hour at RT. The membrane was incubated with rabbit anti-Secretogranin II/SCG2 antigen affinity purified polyclonal antibody (A04779-2) at 1:1000 overnight at 4°C, then washed with TBS-0.1%Tween 3 times with 5 minutes each and probed with a goat anti-rabbit IgG-HRP secondary antibody at a dilution of 1:5000 for 1.5 hour at RT. The signal is developed using an ECL Plus Western Blotting Substrate (Catalog # AR1196-200) with Tanon 5200 system. A specific band was detected for Secretogranin II/SCG2 at approximately 71 kDa. The expected band size for Secretogranin II/SCG2 is at 71 kDa.

### Submit a product review to Biocompare.com

Submit a review of this product to Biocompare.com to receive a \$20 Amazon.com giftcard! Your reviews help your fellow scientists make the right decisions. Thank you for your contribution.



Anti-Secretogranin II/SCG2 Antibody

For Research Use Only. Not for use in diagnostic procedures.