

## Anti-POU3F2 Antibody

Catalog Number: A04783

### About POU3F2

POU3F2, also commonly known as brain-2, is a member of a family of POU domain genes expressed in mouse brain and is thought to be involved in the development of the neocortex and establishment of neural cell lineage. Recent studies suggest that POU3F2 may be involved with the development of neurodegenerative diseases as well as tumor development and proliferation. Along with the neural-lineage-specific transcription factors ASCL1 and MYT1L, POU3F2 can convert fibroblasts to functional neurons in vitro, a form of artificial stem cells termed induced neuronal (iN) cells, suggesting that these cells may be useful in the treatment of neurodegenerative diseases.

### Overview

Product Name	Anti-POU3F2 Antibody
Reactive Species	Human, Mouse, Rat
Description	Boster Bio Anti-POU3F2 Antibody (Catalog # A04783). Tested in ELISA, WB, IF applications. This antibody reacts with Human, Mouse, Rat.
Application	ELISA, IF, WB
Clonality	Polyclonal
Formulation	POU3F2 Antibody is supplied in PBS containing 0.02% sodium azide.
Storage Instructions	POU3F2 antibody can be stored at 4°C for three months and -20°C, stable for up to one year. Avoid repeated freeze-thaw cycles. Antibodies should not be exposed to prolonged high temperatures.
Host	Rabbit
Uniprot ID	P20265

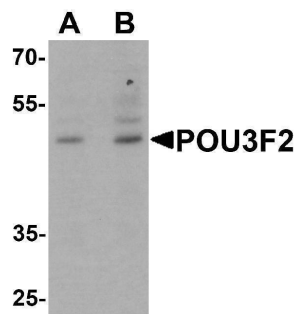
### Technical Details

Immunogen	Rabbit polyclonal POU3F2 antibody was raised against an 18 amino acid peptide near the carboxy terminus of human POU3F2. The immunogen is located within the last 50 amino acids of POU3F2.
Predicted Reactive Species	Chicken
Cross Reactivity	At least two isoforms are known to exist. This antibody will recognize both isoforms. POU3F2 antibody is predicted to not cross-react with other members of the POU domain class 3 family.
Isotype	IgG
Form	Liquid
Concentration	1 mg/mL
Purification	POU3F2 Antibody is affinity chromatography purified via peptide column.

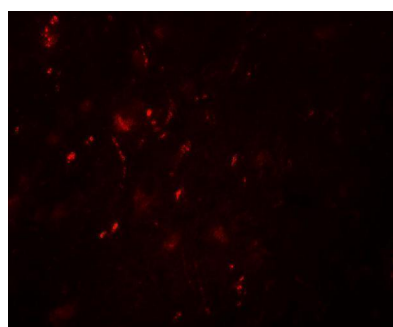
Suggested Dilutions

POU3F2 antibody can be used for detection of POU3F2 by Western blot at 1 - 2 ug/mL. For immunofluorescence start at 20 ug/mL.  
Antibody validated: Western Blot in mouse samples and Immunofluorescence in human samples. All other applications and species not yet tested. Optimal dilutions for each application should be determined by the researcher.

## Anti-POU3F2 Antibody (A04783) Images



Western blot analysis of POU3F2 in 3T3 cell lysate with POU3F2 antibody at (A) 1 and (B) 2 ug/mL.



Immunofluorescence of POU3F2 in human brain tissue with POU3F2 antibody at 20 ug/mL.

### Submit a product review to [Biocompare.com](https://www.biocompare.com)

Submit a review of this product to [Biocompare.com](https://www.biocompare.com) to receive a \$20 Amazon.com giftcard! Your reviews help your fellow scientists make the right decisions. Thank you for your contribution.



Anti-POU3F2 Antibody

For Research Use Only. Not for use in diagnostic procedures.