

Anti-Bif SH3GLB1 Antibody

Catalog Number: A04792

About SH3GLB1

Apoptosis plays a major role in normal organism development, tissue homeostasis, and removal of damaged cells and is caused by the activation of proteolytic enzymes termed caspases. Proteins that comprise the Bcl-2 family such as Bax appear to control the activation of these enzymes. Bax activity was found to be regulated by its association with Bax-interacting factor 1 (BIF), a member of the endophilin B family that is associated with intracellular membranes. Following this interaction, Bax undergoes a conformational change and translocates to mitochondrial membranes. The Bax/BIF interaction appears to be enhanced by apoptotic stimuli, suggesting that BIF acts as the trigger to activate Bax, and as suppression of BIF promoted HeLa cell colony formation in soft agar, it may have a role in the suppression of cancer progression. At least two isoforms of BIF are known to exist.

Overview

Product Name	Anti-Bif SH3GLB1 Antibody
Reactive Species	Human, Mouse
Description	Boster Bio Anti-Bif SH3GLB1 Antibody (Catalog # A04792). Tested in ELISA, WB, ICC applications. This antibody reacts with Human, Mouse.
Application	ELISA, ICC, WB
Clonality	Polyclonal
Formulation	Bif Antibody is supplied in PBS containing 0.02% sodium azide.
Storage Instructions	Bif antibody can be stored at 4°C for three months and -20°C, stable for up to one year. Avoid repeated freeze-thaw cycles. Antibodies should not be exposed to prolonged high temperatures.
Host	Rabbit
Uniprot ID	Q9Y371

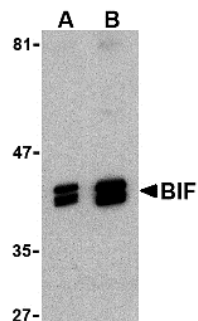
Technical Details

Immunogen	BIF antibody was raised against a 15 amino acid synthetic peptide from near the carboxy terminus of human BIF. The immunogen is located within the last 50 amino acids of Bif.
Predicted Reactive Species	Bovine, Chicken, Rat
Isotype	IgG
Form	Liquid
Concentration	1 mg/mL
Purification	Bif Antibody is affinity chromatography purified via peptide column.

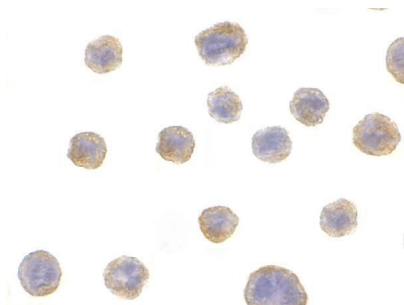
Suggested Dilutions

BIF antibody can be used for the detection of BIF by Western blot at 1 - 2 ug/mL. Antibody can also be used for immunocytochemistry starting at 10 ug/mL.
Antibody validated: Western Blot in human samples and Immunocytochemistry in human samples.
All other applications and species not yet tested. Optimal dilutions for each application should be determined by the researcher.

Anti-Bif SH3GLB1 Antibody (A04792) Images



Western blot analysis of BIF in HeLa cell lysate with BIF antibody at (A) 1 and (B) 2 ug/mL.



Immunocytochemistry of BIF in HeLa with BIF antibody at 10 ug/mL.

Submit a product review to Biocompare.com

Submit a review of this product to Biocompare.com to receive a \$20 Amazon.com giftcard! Your reviews help your fellow scientists make the right decisions. Thank you for your contribution.



Anti-Bif SH3GLB1 Antibody

For Research Use Only. Not for use in diagnostic procedures.