

Anti-EPAC2 RAPGEF4 Antibody

Catalog Number: A04794

About RAPGEF4

EPAC2, also known as Rap guanine nuclear exchange factor 4 and cAMPGEF-II, is belongs to a family of cyclic adenosine monophosphate (cAMP) binding proteins with guanine nucleotide exchange factor. Like the related protein EPAC1, EPAC2 signaling plays a role in numerous cellular processes such as integrin-mediated cell adhesion, muscle contraction, learning and memory, cell proliferation, and inflammation. Recent evidence suggests that EPAC2 induces synapse remodeling and depression, with mutations in its gene being found in patients with autism.

Overview

Product Name	Anti-EPAC2 RAPGEF4 Antibody
Reactive Species	Human, Mouse, Rat
Description	Boster Bio Anti-EPAC2 RAPGEF4 Antibody (Catalog # A04794). Tested in ELISA, WB, IHC-P, IF applications. This antibody reacts with Human, Mouse, Rat.
Application	ELISA, IF, IHC-P, WB
Clonality	Polyclonal
Formulation	EPAC2 Antibody is supplied in PBS containing 0.02% sodium azide.
Storage Instructions	EPAC2 antibody can be stored at 4°C for three months and -20°C, stable for up to one year. Avoid repeated freeze-thaw cycles. Antibodies should not be exposed to prolonged high temperatures.
Host	Rabbit
Uniprot ID	Q8WZA2

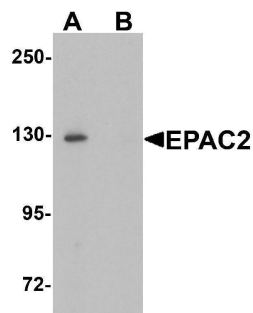
Technical Details

Immunogen	EPAC2 antibody was raised against a 15 amino acid synthetic peptide near the amino terminus of human EPAC2. The immunogen is located within the first 50 amino acids of EPAC2.
Predicted Reactive Species	Bovine, Chicken, Rat
Cross Reactivity	At least two isoforms of EPAC2 are known to exist; this antibody will detect only the larger isoform. EPAC2 antibody is predicted to not cross-react with EPAC2
Isotype	IgG
Form	Liquid
Concentration	1 mg/mL
Purification	EPAC2 Antibody is affinity chromatography purified via peptide column.

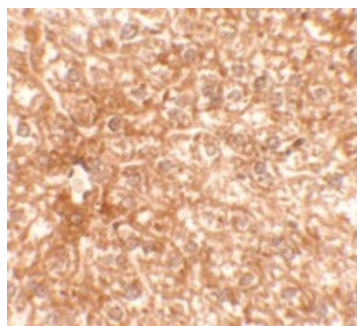
Suggested Dilutions

EPAC2 antibody can be used for detection of EPAC1 by Western blot at 1 ug/mL. Antibody can also be used for immunohistochemistry starting at 2.5 ug/mL. For immunofluorescence start at 20 ug/mL. Antibody validated: Western Blot in rat samples; Immunohistochemistry in mouse samples and Immunofluorescence in mouse samples. All other applications and species not yet tested. Optimal dilutions for each application should be determined by the researcher.

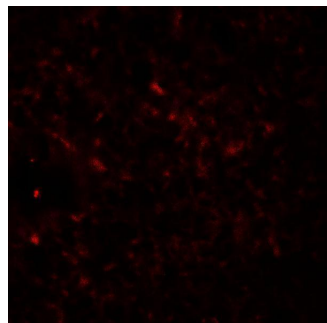
Anti-EPAC2 RAPGEF4 Antibody (A04794) Images



Western blot analysis of EPAC2 in rat liver tissue lysate with EPAC2 antibody at 1 ug/mL in (A) the absence and (B) the presence of blocking peptide.



Immunohistochemistry of EPAC3 in mouse liver tissue with EPAC3 antibody at 2.5 ug/mL.



Immunofluorescence of EPAC2 in mouse liver tissue with EPAC2 antibody at 20 ug/mL.

Submit a product review to [Biocompare.com](https://www.biocompare.com)

Submit a review of this product to [Biocompare.com](https://www.biocompare.com) to receive a \$20 Amazon.com giftcard! Your reviews help your fellow scientists make the right decisions. Thank you for your contribution.



Anti-EPAC2 RAPGEF4 Antibody

For Research Use Only. Not for use in diagnostic procedures.