

Anti-MDH2 Antibody (Center)

Catalog Number: A04803-1

About MDH2

MDH2 is localized to the mitochondria and may play pivotal roles in the malate-aspartate shuttle that operates in the metabolic coordination between cytosol and mitochondria.

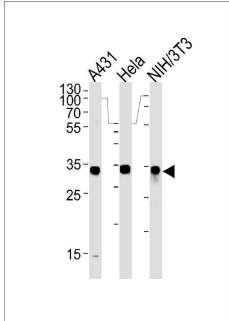
Overview

Product Name	Anti-MDH2 Antibody (Center)
Reactive Species	Human, Mouse
Description	Boster Bio Anti-MDH2 Antibody (Center) (Catalog # A04803-1). Tested in WB, Flow Cytometry, IHC-P application(s). This antibody reacts with Human, Mouse.
Application	Flow Cytometry, IHC-P, WB
Clonality	Polyclonal
Formulation	Purified polyclonal antibody supplied in PBS with 0.09% (W/V) sodium azide.
Storage Instructions	Maintain refrigerated at 2-8°C for up to 2 weeks. For long-term storage, store at -20°C in small aliquots to prevent freeze-thaw cycles.
Host	Rabbit
Uniprot ID	P40926

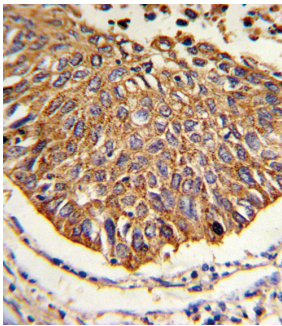
Technical Details

Immunogen	This MDH2 antibody is generated from rabbits immunized with a KLH conjugated synthetic peptide between 86-115 amino acids from the Central region of human MDH2.
Predicted Reactive Species	Bovine, C. elegans, Monkey, Pig, Rat, Yeast
Isotype	Rabbit IgG
Purification	This antibody is prepared by Saturated Ammonium Sulfate (SAS) precipitation followed by dialysis against PBS.
Suggested Dilutions	WB: 1:1000 IHC-P: 1:10-1:50 FC: 1:10-1:50

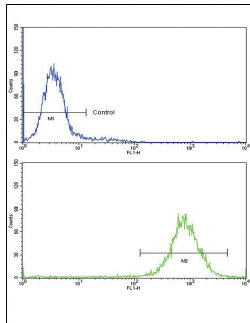
Anti-MDH2 Antibody (Center) (A04803-1) Images



MDH2 Antibody (Center) western blot analysis in A431, HeLa and mouse NIH/3T3 cell line lysates (35ug/lane). This demonstrates the MDH2 antibody detected the MDH2 protein (arrow).



Formalin-fixed and paraffin-embedded human lung carcinoma reacted with MDH2 Antibody (Center), which was peroxidase-conjugated to the secondary antibody, followed by DAB staining. This data demonstrates the use of this antibody for immunohistochemistry; clinical relevance has not been evaluated.



Flow cytometric analysis of K562 cells using MDH2 Antibody (Center) (bottom histogram) compared to a negative control cell (top histogram). FITC-conjugated goat-anti-rabbit secondary antibodies were used for the analysis.

Submit a product review to Biocompare.com

Submit a review of this product to Biocompare.com to receive a \$20 Amazon.com giftcard! Your reviews help your fellow scientists make the right decisions. Thank you for your contribution.



Anti-MDH2 Antibody (Center)

For Research Use Only. Not for use in diagnostic procedures.