

Anti-CLIP-associating protein 1 CLASP1 Antibody

Catalog Number: A04813-2

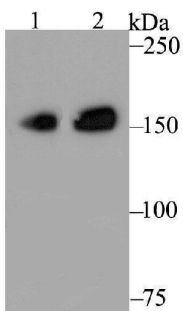
Overview

Product Name	Anti-CLIP-associating protein 1 CLASP1 Antibody
Reactive Species	Human, Mouse, Rat
Description	Boster Bio Anti-CLIP-associating protein 1 CLASP1 Antibody catalog # A04813-2. Tested in WB,ICC/IF,IHC,Flow Cytometry applications. This antibody reacts with Human,Mouse,Rat.
Application	Flow Cytometry, IF, IHC, ICC, WB
Clonality	Polyclonal
Formulation	Rabbit IgG, 1mg/ml in PBS with 0.02% sodium azide, 50% glycerol, pH7.2
Storage Instructions	Store at -20°C for one year. For short term storage and frequent use, store at 4°C for up to one month. Avoid repeated freeze-thaw cycles.
Host	Rabbit
Uniprot ID	Q7Z460

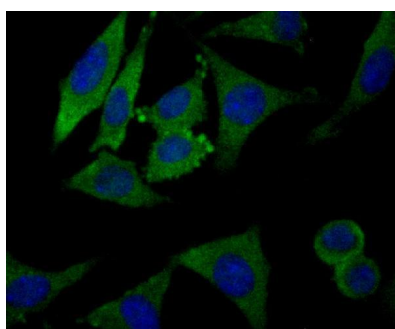
Technical Details

Immunogen	Recombinant protein within human CLASP1 aa 1-200.
Isotype	IgG
Form	Liquid
Concentration	1 mg/ml
Purification	Protein A purified.
Suggested Dilutions	WB: 1:500-1:2,000 ICC: 1:50-1:200 IHC: 1:50-1:200 FC: 1:50-1:100

Anti-CLIP-associating protein 1 CLASP1 Antibody (A04813-2) Images



Western blot analysis of CLASP1 on different lysates. Proteins were transferred to a PVDF membrane and blocked with 5% BSA in PBS for 1 hour at room temperature. The primary antibody was used at a 1:500 dilution in 5% BSA at room temperature for 2 hours. Goat Anti-Rabbit IgG - HRP Secondary Antibody (HA1001) at 1:5,000 dilution was used for 1 hour at room temperature. Positive: Lane 1: Daudi Lane 2: HepG2



ICC staining CLASP1 in SH-SY-5Y cells (green). Formalin fixed cells were permeabilized with 0.1% Triton X-100 in TBS for 10 minutes at room temperature and blocked with 1% Blocker BSA for 15 minutes at room temperature. Cells were probed with YTHDF1 polyclonal antibody at a dilution of 1:50 for 1 hour at room temperature, washed with PBS. Alexa Fluor™ 488 Goat anti-Rabbit IgG was used as the secondary antibody at 1/100 dilution. The nuclear counter stain is DAPI (blue).

Submit a product review to [Biocompare.com](https://www.biocompare.com)

Submit a review of this product to [Biocompare.com](https://www.biocompare.com) to receive a \$20 Amazon.com giftcard! Your reviews help your fellow scientists make the right decisions. Thank you for your contribution.



Anti-CLIP-associating protein 1 CLASP1 Antibody

For Research Use Only. Not for use in diagnostic procedures.