

Anti-CLP36/PDLIM1 Antibody Picoband®

Catalog Number: A04832-3

About PDLIM1

Enables transcription coactivator activity. Acts upstream of or within regulation of transcription by RNA polymerase II. Part of transcription regulator complex. Is expressed in several structures, including alimentary system; branchial arch; genitourinary system; heart; and sensory organ. Orthologous to human PDLIM1 (PDZ and LIM domain 1).

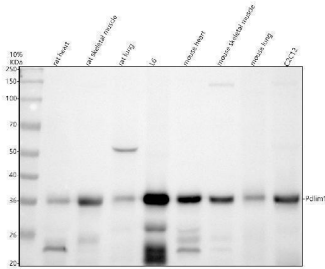
Overview

Product Name	Anti-CLP36/PDLIM1 Antibody Picoband®
Reactive Species	Mouse, Rat
Description	Boster Bio Anti-CLP36/PDLIM1 Antibody Picoband® catalog # A04832-3. Tested in WB applications. This antibody reacts with Mouse, Rat. The brand Picoband indicates this is a premium antibody that guarantees superior quality, high affinity, and strong signals with minimal background in Western blot applications. Only our best-performing antibodies are designated as Picoband, ensuring unmatched performance.
Application	WB
Clonality	Polyclonal
Formulation	Each vial contains 4 mg Trehalose, 0.9 mg NaCl, 0.2 mg Na ₂ HPO ₄ .
Storage Instructions	At -20°C for one year from date of receipt. After reconstitution, at 4°C for one month. It can also be aliquotted and stored frozen at -20°C for six months. Avoid repeated freezing and thawing.
Host	Rabbit
Uniprot ID	O70400

Technical Details

Immunogen	A synthetic peptide corresponding to a sequence in the middle region of mouse CLP36/PDLIM1. Mouse CLP36/PDLIM1 shares 90% and 95% amino acid (aa) sequence identity with human and rat CLP36/PDLIM1, respectively.
Form	Lyophilized
Concentration	Adding 0.2 ml of distilled water will yield a concentration of 500 ug/ml.
Purification	Immunogen affinity purified.
Suggested Dilutions	Western blot, 0.25-0.5 ug/ml, Mouse, Rat

Anti-CLP36/PDLIM1 Antibody Picoband® (A04832-3) Images



Western blot analysis of CLP36/PDLIM1 using anti-CLP36/PDLIM1 antibody (A04832-3). Electrophoresis was performed on a 10% SDS-PAGE gel at 80V (Stacking gel) / 120V (Resolving gel) for 2 hours. The sample well of each lane was loaded with 30 ug of sample under reducing conditions. Lane 1: rat heart tissue lysates, Lane 2: rat small intestine tissue lysates, Lane 3: rat lung tissue lysates, Lane 4: rat L6 whole cell lysates, Lane 5: mouse heart tissue lysates, Lane 6: mouse small intestine tissue lysates, Lane 7: mouse lung tissue lysates, Lane 8: mouse C2C12 whole cell lysates. After electrophoresis, proteins were transferred to a nitrocellulose membrane at 150 mA for 50-90 minutes. Blocked the membrane with 5% non-fat milk/TBS for 1.5 hour at RT. The membrane was incubated with rabbit anti-CLP36/PDLIM1 antigen affinity purified polyclonal antibody (A04832-3) at 0.5 ug/mL overnight at 4°C, then washed with TBS-0.1%Tween 3 times with 5 minutes each and probed with a goat anti-rabbit IgG-HRP secondary antibody at a dilution of 1:5000 for 1.5 hour at RT. The signal is developed using an ECL Plus Western Blotting Substrate (Catalog # AR1196-200) with Tanon 5200 system. A specific band was detected for CLP36/PDLIM1 at approximately 36 kDa. The expected band size for CLP36/PDLIM1 is at 36 kDa.

Submit a product review to [Biocompare.com](https://www.biocompare.com)

Submit a review of this product to [Biocompare.com](https://www.biocompare.com) to receive a \$20 Amazon.com giftcard! Your reviews help your fellow scientists make the right decisions. Thank you for your contribution.



Anti-CLP36/PDLIM1 Antibody

For Research Use Only. Not for use in diagnostic procedures.