

Anti-GPCR LGR8/RXFP2 Antibody Picoband™

Catalog Number: A04848-1

About RXFP2

Relaxin/insulin-like family peptide receptor 2, also known as RXFP2, is a human G-protein coupled receptor. It is mapped to 13q13.1. This gene encodes a member of the GPCR (G protein-coupled, 7-transmembrane receptor) family. Mutations in this gene are associated with cryptorchidism. Alternatively spliced transcript variants encoding different isoforms have been found for this gene.

Overview

Product Name	Anti-GPCR LGR8/RXFP2 Antibody Picoband™
Reactive Species	Human
Description	Boster Bio Anti-GPCR LGR8/RXFP2 Antibody Picoband™ catalog # A04848-1. Tested in Flow Cytometry, WB applications. This antibody reacts with Human.
Application	Flow Cytometry, WB
Clonality	Polyclonal
Formulation	Each vial contains 4mg Trehalose, 0.9mg NaCl, 0.2mg Na ₂ HPO ₄ , 0.05mg NaN ₃ .
Storage Instructions	Store at -20°C for one year from date of receipt. After reconstitution, at 4°C for one month. It can also be aliquotted and stored frozen at -20°C for six months. Avoid repeated freeze-thaw cycles.
Host	Rabbit
Uniprot ID	Q8WXD0

Technical Details

Immunogen	A synthetic peptide corresponding to a sequence at the N-terminus of human GPCR LGR8.
Recommended Detection Systems	Boster recommends Enhanced Chemiluminescent Kit with anti-Rabbit IgG (EK1002) for Western blot.
Cross Reactivity	No cross-reactivity with other proteins.
Isotype	Rabbit IgG
Form	Lyophilized
Concentration	Adding 0.2 ml of distilled water will yield a concentration of 500 ug/ml.
Purification	Immunogen affinity purified.
Suggested Dilutions	Dilute the sample so that the expected range of concentrations fall within the detection range of this kit.

If the expected range of concentration is unknown, a pilot test should be conducted to decide the optimal dilution ratio for your samples.

Some PubMed article(s) citing the expression level of this target are as follows:

Boster Bio's internal QC testing used:

Western blot, 0.1-0.5ug/ml

Flow Cytometry, 1-3ug/1x10⁶ cells

Anti-GPCR LGR8/RXFP2 Antibody Picoband™ (A04848-1) Images

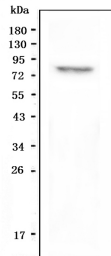


Figure 1. Western blot analysis of GPCR LGR8 using anti-GPCR LGR8 antibody (A04848-1). Electrophoresis was performed on a 5-20% SDS-PAGE gel at 70V (Stacking gel) / 90V (Resolving gel) for 2-3 hours. The sample well of each lane was loaded with 50ug of sample under reducing conditions. Lane 1: human SHG-44 whole cell lysate. After Electrophoresis, proteins were transferred to a Nitrocellulose membrane at 150mA for 50-90 minutes. Blocked the membrane with 5% Non-fat Milk/ TBS for 1.5 hour at RT. The membrane was incubated with rabbit anti-GPCR LGR8 antigen affinity purified polyclonal antibody (Catalog # A04848-1) at 0.5 ug/mL overnight at 4°C, then washed with TBS-0.1%Tween 3 times with 5 minutes each and probed with a goat anti-rabbit IgG-HRP secondary antibody at a dilution of 1:10000 for 1.5 hour at RT. The signal is developed using an Enhanced Chemiluminescent detection (ECL) kit (Catalog # EK1002) with Tanon 5200 system. A specific band was detected for GPCR LGR8 at approximately 86KD. The expected band size for GPCR LGR8 is at 86KD.

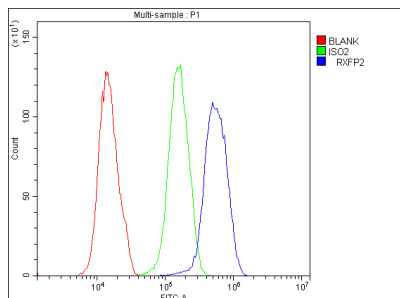


Figure 2. Flow Cytometry analysis of U251 cells using anti-GPCR LGR8 antibody (A04848-1). Overlay histogram showing U251 cells stained with A04848-1 (Blue line). The cells were blocked with 10% normal goat serum. And then incubated with rabbit anti-GPCR LGR8 Antibody (A04848-1, 1ug/1x10⁶ cells) for 30 min at 20°C. DyLight®488 conjugated goat anti-rabbit IgG (BA1127, 5-10ug/1x10⁶ cells) was used as secondary antibody for 30 minutes at 20°C. Isotype control antibody (Green line) was rabbit IgG (1ug/1x10⁶) used under the same conditions. Unlabelled sample (Red line) was also used as a control.

Submit a product review to Biocompare.com

Submit a review of this product to Biocompare.com to receive a \$20 Amazon.com giftcard! Your reviews help your fellow scientists make the right decisions. Thank you for your contribution.



Anti-GPCR LGR8/RXFP2 Antibody™