

Anti-LALBA Antibody (Center)

Catalog Number: A04858

About LALBA

This gene encodes alpha-lactalbumin, a principal protein of milk. Alpha-lactalbumin forms the regulatory subunit of the lactose synthase (LS) heterodimer and beta 1,4-galactosyltransferase (beta4Gal-T1) forms the catalytic component. Together, these proteins enable LS to produce lactose by transferring galactose moieties to glucose. As a monomer, alpha-lactalbumin strongly binds calcium and zinc ions and may possess bactericidal or antitumor activity. A folding variant of alpha-lactalbumin, called HAMLET, likely induces apoptosis in tumor and immature cells.

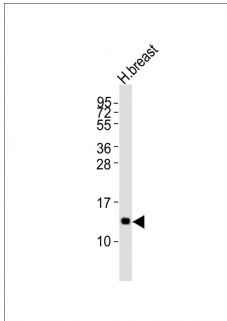
Overview

Product Name	Anti-LALBA Antibody (Center)
Reactive Species	Human
Description	Boster Bio Anti-LALBA Antibody (Center) (Catalog # A04858). Tested in WB, IHC-P application(s). This antibody reacts with Human.
Application	IHC-P, WB
Clonality	Polyclonal
Formulation	Purified polyclonal antibody supplied in PBS with 0.09% (W/V) sodium azide.
Storage Instructions	Maintain refrigerated at 2-8°C for up to 2 weeks. For long-term storage, store at -20°C in small aliquots to prevent freeze-thaw cycles.
Host	Rabbit
Uniprot ID	P00709

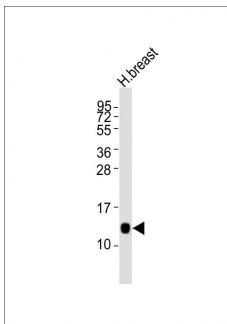
Technical Details

Immunogen	This LALBA antibody is generated from rabbits immunized with a KLH conjugated synthetic peptide between 39-68 amino acids from the Central region of human LALBA.
Predicted Reactive Species	Bovine, Mouse
Isotype	Rabbit IgG
Purification	This antibody is purified through a protein A column, followed by peptide affinity purification.
Suggested Dilutions	WB: 1:1000 IHC-P: 1:25

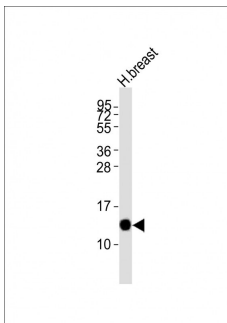
Anti-LALBA Antibody (Center) (A04858) Images



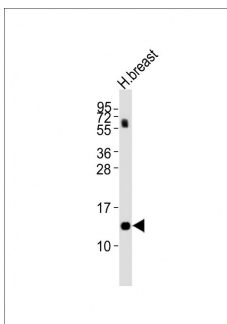
Anti-LALBA Antibody (Center) at 1:2000 dilution + human breast lysates. Lysates/proteins at 20 µg per lane. Secondary Goat Anti-Rabbit IgG, (H+L), Peroxidase conjugated at 1/10000 dilution. Predicted band size : 16 kDa. Blocking/Dilution buffer: 5% NFDN/TBST.



Anti-LALBA Antibody (Center) at 1:2000 dilution + human breast lysates. Lysates/proteins at 20 µg per lane. Secondary Goat Anti-Rabbit IgG, (H+L), Peroxidase conjugated at 1/10000 dilution. Predicted band size : 16 kDa. Blocking/Dilution buffer: 5% NFDN/TBST.

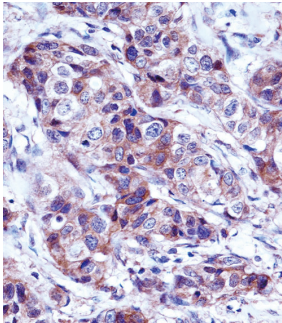
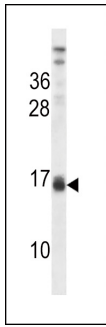


Anti-LALBA Antibody (Center) at 1:2000 dilution + human breast lysates. Lysates/proteins at 20 µg per lane. Secondary Goat Anti-Rabbit IgG, (H+L), Peroxidase conjugated at 1/10000 dilution. Predicted band size : 16 kDa. Blocking/Dilution buffer: 5% NFDN/TBST.

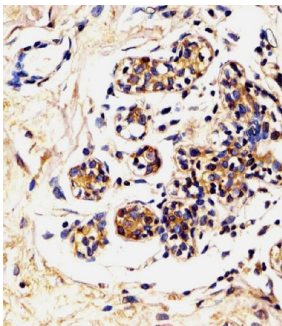


Anti-LALBA Antibody (Center) at 1:2000 dilution + human breast lysates. Lysates/proteins at 20 µg per lane. Secondary Goat Anti-Rabbit IgG, (H+L), Peroxidase conjugated at 1/10000 dilution. Predicted band size : 16 kDa. Blocking/Dilution buffer: 5% NFDN/TBST.

LALBA Antibody (Center) (Cat. #A04858) western blot analysis in CEM cell line lysates (35 µg/lane). This demonstrates the LALBA antibody detected the LALBA protein (arrow).



LALBA Antibody (Center) (A04858) immunohistochemistry analysis in formalin fixed and paraffin embedded human breast carcinoma followed by peroxidase conjugation of the secondary antibody and DAB staining. This data demonstrates the use of LALBA Antibody (Center) for immunohistochemistry. Clinical relevance has not been evaluated.



A04858 staining LALBA in Human breast tissue sections by Immunohistochemistry (IHC-P -paraformaldehyde-fixed, paraffin-embedded sections). Tissue was fixed with formaldehyde and blocked with 3% BSA for 0.5 hour at room temperature; antigen retrieval was by heat mediation with a citrate buffer (pH6). Samples were incubated with primary antibody (1/25) for 1 hours at 37°C. A undiluted biotinylated goat polyvalent antibody was used as the secondary antibody.

Submit a product review to [Biocompare.com](https://www.biocompare.com)

Submit a review of this product to [Biocompare.com](https://www.biocompare.com) to receive a \$20 Amazon.com giftcard! Your reviews help your fellow scientists make the right decisions. Thank you for your contribution.



Anti-LALBA Antibody (Center)

For Research Use Only. Not for use in diagnostic procedures.