

Anti-APH1 Antibody

Catalog Number: A04859

About APH1A

APH1 was initially identified as a component of the Notch pathway in *C. elegans*. Along with nicastrin, PEN2, and presenilin-1 APH1 is an essential component of the gamma-secretase complex which cleave the amyloid precursor protein (APP) at what are known as the gamma- and epsilon-sites and can lead to the accumulation of the Amyloid beta peptide (A β) cleavage product that is associated with Alzheimer's disease. APH1 exists in at least three distinct isoforms with APH1a as the principal isoform present in the gamma-secretase complex. Mice deficient in this isoform, but not the other two, were lethal at E10.5, with impaired vascular and neural development observed.

Overview

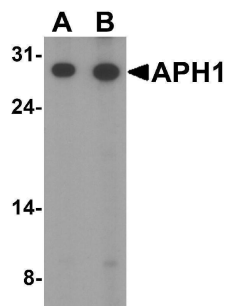
Product Name	Anti-APH1 Antibody
Reactive Species	Human, Mouse, Rat
Description	Boster Bio Anti-APH1 Antibody (Catalog # A04859). Tested in ELISA, WB, IHC-P applications. This antibody reacts with Human, Mouse, Rat.
Application	ELISA, IHC-P, WB
Clonality	Polyclonal
Formulation	APH1 Antibody is supplied in PBS containing 0.02% sodium azide.
Storage Instructions	APH1 antibody can be stored at 4°C for three months and -20°C, stable for up to one year. Avoid repeated freeze-thaw cycles. Antibodies should not be exposed to prolonged high temperatures.
Host	Rabbit
Uniprot ID	Q96BI3

Technical Details

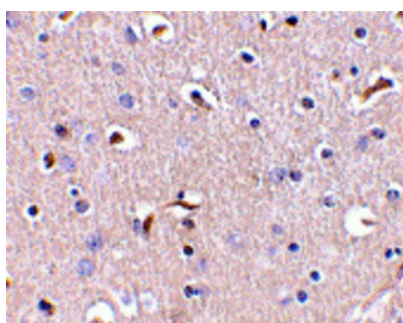
Immunogen	APH1 antibody was raised against a 18 amino acid synthetic peptide from near the center of human APH1. The immunogen is located within amino acids 80 - 130 of APH1.
Predicted Reactive Species	Bovine, Chicken, Rat
Isotype	IgG
Form	Liquid
Concentration	1 mg/mL
Purification	APH1 Antibody is affinity chromatography purified via peptide column.
Suggested Dilutions	APH1 antibody can be used for detection of APH1 by Western blot at 0.5 - 1 μ g/mL. Despite its predicted molecular weight, APH1 protein often migrates at aberrant locations in SDS-PAGE.

Antibody can also be used for immunohistochemistry starting at 5 ug/mL.
Antibody validated: Western Blot in mouse samples and Immunohistochemistry in human samples.
All other applications and species not yet tested. Optimal dilutions for each application should be determined by the researcher.

Anti-APH1 Antibody (A04859) Images



Western blot analysis of APH1 in RAW264.7 cell lysate with APH1 antibody at (A) 1 and (B) 2 ug/mL.



Immunohistochemistry of APH1 in human brain tissue with APH1 antibody at 5 ug/mL.

Submit a product review to Biocompare.com

Submit a review of this product to Biocompare.com to receive a \$20 Amazon.com giftcard! Your reviews help your fellow scientists make the right decisions. Thank you for your contribution.



Anti-APH1 Antibody

For Research Use Only. Not for use in diagnostic procedures.