

## Anti-LPCAT1 Antibody

Catalog Number: A04863-1

### About LPCAT1

This gene encodes a member of the 1-acyl-sn-glycerol-3-phosphate acyltransferase family of proteins. The encoded enzyme plays a role in phospholipid metabolism, specifically in the conversion of lysophosphatidylcholine to phosphatidylcholine in the presence of acyl-CoA. This process is important in the synthesis of lung surfactant and platelet-activating factor (PAF). Elevated expression of this gene may contribute to the progression of oral squamous cell, prostate, breast, and other human cancers.

### Overview

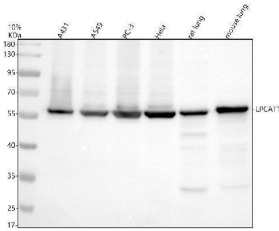
Product Name	Anti-LPCAT1 Antibody
Reactive Species	Human, Mouse, Rat
Description	Boster Bio Anti-LPCAT1 Antibody catalog # A04863-1. Tested in WB, IHC, ICC, IF, IP, ELISA applications. This antibody reacts with Human, Mouse, Rat.
Application	ELISA, IP, IF, IHC, ICC, WB
Clonality	Polyclonal
Formulation	500 ug/ml antibody with PBS, 0.02% NaN <sub>3</sub> , 1 mg stabilizing protein and 50% glycerol *This antibody is supplied in a stabilized formulation. Compatibility with conjugation reactions depends on the chemistry of the conjugation method used. For conjugation methods that are not compatible with the stabilizing components present in this formulation, a carrier-free antibody format is required.
Storage Instructions	12 months from date of receipt at -20°C as supplied. 6 months 2 to 8°C after reconstitution. Avoid repeated freezing and thawing.
Host	Rabbit
Uniprot ID	Q8NF37

### Technical Details

Immunogen	E.coli-derived human LPCAT1 recombinant protein (Position: I190-R530).
Form	Liquid
Concentration	500 ug/ml
Purification	Immunogen affinity purified.
Suggested Dilutions	Western blot, 1:500-2000 Immunohistochemistry, 1:50-400 Immunocytochemistry/Immunofluorescence, 1:50-400 Immunoprecipitation, 1:50

	ELISA, 1:100-1000
--	-------------------

## Anti-LPCAT1 Antibody (A04863-1) Images



Western blot analysis of LPCAT1 using anti-LPCAT1 antibody (A04863-1). Electrophoresis was performed on a 10% SDS-PAGE gel at 80V (Stacking gel) / 120V (Resolving gel) for 2 hours. The sample well of each lane was loaded with 30 ug of sample under reducing conditions. Lane 1: human A431 whole cell lysates, Lane 2: human A549 whole cell lysates, Lane 3: human PC-3 whole cell lysates, Lane 4: human Hela whole cell lysates, Lane 5: rat lung tissue lysates, Lane 6: mouse lung tissue lysates. After electrophoresis, proteins were transferred to a nitrocellulose membrane at 150 mA for 50-90 minutes. Blocked the membrane with 5% non-fat milk/TBS for 1.5 hour at RT. The membrane was incubated with rabbit anti-LPCAT1 antigen affinity purified polyclonal antibody (A04863-1) at 1: 1000 overnight at 4°C, then washed with TBS-0.1% Tween 3 times with 5 minutes each and probed with a goat anti-rabbit IgG-HRP secondary antibody at a dilution of 1:5000 for 1.5 hour at RT. The signal is developed using an ECL Plus Western Blotting Substrate (Catalog # AR1196-200) with Tanon 5200 system. A specific band was detected for LPCAT1 at approximately 59 kDa. The expected band size for LPCAT1 is at 59 kDa.

### Submit a product review to Biocompare.com

Submit a review of this product to Biocompare.com to receive a \$20 Amazon.com giftcard! Your reviews help your fellow scientists make the right decisions. Thank you for your contribution.



### Anti-LPCAT1 Antibody

For Research Use Only. Not for use in diagnostic procedures.