

Anti-ZNF42 MZF1 Antibody

Catalog Number: A04865-2

About MZF1

Binds to target promoter DNA and functions as transcription regulator. Regulates transcription from the PADI1 and CDH2 promoter. May be one regulator of transcriptional events during hemopoietic development.

Hromas R., J. Biol. Chem. 266:14183-14187(1991).

Peterson M.J., Gene 254:105-118(2000).

Olsen J.V., Cell 127:635-648(2006).

Overview

Product Name	Anti-ZNF42 MZF1 Antibody
Reactive Species	Human, Mouse, Rat
Description	Boster Bio Anti-ZNF42 MZF1 Antibody catalog # A04865-2. Tested in WB,IHC,ICC applications. This antibody reacts with Human,Mouse,Rat.
Application	IHC, ICC, WB
Clonality	Polyclonal
Formulation	Rabbit IgG, 1mg/ml in PBS with 0.02% sodium azide, 50% glycerol, pH7.2
Storage Instructions	Store at -20°C for one year. For short term storage and frequent use, store at 4°C for up to one month. Avoid repeated freeze-thaw cycles.
Host	Rabbit
Uniprot ID	P28698

Technical Details

Immunogen	Synthesized peptide derived from N-terminal of human MZF-1.
Predicted Reactive Species	Boar, Bovine, Canine, Golden Hamster
Isotype	IgG
Form	Liquid
Concentration	1 mg/ml
Purification	The antibody was affinity-purified from rabbit antiserum by affinity-chromatography using epitope-specific immunogen and the purity is > 95% (by SDS-PAGE).

Suggested Dilutions

Dilute the sample so that the expected range of concentrations fall within the detection range of this kit.

If the expected range of concentration is unknown, a pilot test should be conducted to decide the optimal dilution ratio for your samples.

Some PubMed article(s) citing the expression level of this target are as follows:

Boster Bio's internal QC testing used:

WB: 1:500-1:1000

IHC: 1:50-1:200

ICC: 1:50-1:200

Anti-ZNF42 MZF1 Antibody (A04865-2) Images

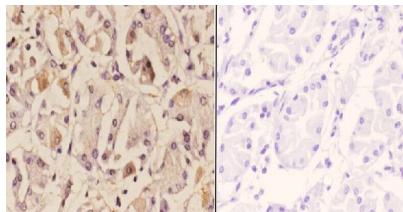


Figure 2. Immunohistochemistry validation of MZF1 using Anti-ZNF42 MZF1 Antibody (A04865-2).

Immunohistochemistry (IHC) analyzes of ZNF42 pAb in paraffin-embedded human stomach carcinoma tissue at 1:50, showing cytoplasmic and nucleus staining. Negative control (the right) Using PBS instead of primary antibody

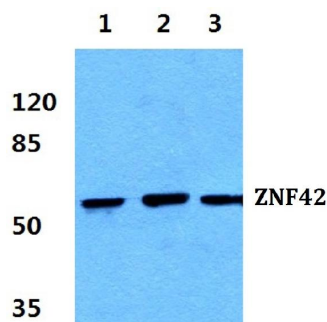


Figure 1. Western blotting validation for Anti-ZNF42 MZF1 Antibody A04865-2

Western blot (WB) analysis of ZNF42 polyclonal antibody at 1:500 dilution

Lane1:HEK293T cell lysate

Lane2:sp2/0 cell lysate

Lane3:PC12 cell lysate

Electrophoresis was performed on a SDS-PAGE gel. To determine SDS-PAGE gel concentration

Submit a product review to Biocompare.com

Submit a review of this product to Biocompare.com to receive a \$20 Amazon.com giftcard! Your reviews help your fellow scientists make the right decisions. Thank you for your contribution.



Anti-ZNF42 MZF1 Antibody