

Anti-Smoothelin/SMTN Antibody Picoband®

Catalog Number: A04895

About SMTN

Smoothelin is a protein that in humans is encoded by the SMTN gene. This gene encodes a structural protein that is found exclusively in contractile smooth muscle cells. It associates with stress fibers and constitutes part of the cytoskeleton. This gene is localized to chromosome 22q12.3, distal to the TUPLE1 locus and outside the DiGeorge syndrome deletion. Alternative splicing of this gene results in multiple transcript variants encoding distinct isoforms.

Overview

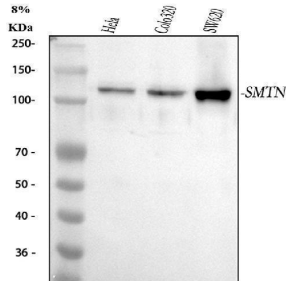
Product Name	Anti-Smoothelin/SMTN Antibody Picoband®
Reactive Species	Human
Description	Boster Bio Anti-Smoothelin/SMTN Antibody Picoband® catalog # A04895. Tested in WB applications. This antibody reacts with Human. The brand Picoband indicates this is a premium antibody that guarantees superior quality, high affinity, and strong signals with minimal background in Western blot applications. Only our best-performing antibodies are designated as Picoband, ensuring unmatched performance.
Application	WB
Clonality	Polyclonal
Formulation	Each vial contains 4mg Trehalose, 0.9mg NaCl, 0.2mg Na ₂ HPO ₄ , 0.01mg NaN ₃ .
Storage Instructions	Store at -20°C for one year from date of receipt. After reconstitution, at 4°C for one month. It can also be aliquotted and stored frozen at -20°C for six months. Avoid repeated freeze-thaw cycles.
Host	Rabbit
Uniprot ID	P53814

Technical Details

Immunogen	A synthetic peptide corresponding to a sequence at the N-terminus of human Smoothelin, which shares 97.3% amino acid (aa) sequence identity with mouse Smoothelin.
Recommended Detection Systems	Boster recommends Enhanced Chemiluminescent Kit with anti-Rabbit IgG (EK1002) for Western blot.
Cross Reactivity	No cross-reactivity with other proteins.
Isotype	Rabbit IgG
Form	Lyophilized
Concentration	Adding 0.2 ml of distilled water will yield a concentration of 500 ug/ml.

Purification	Immunogen affinity purified.
Suggested Dilutions	Western blot, 0.1-0.5ug/ml, Human

Anti-Smoothelin/SMTN Antibody Picoband® (A04895) Images



Western blot analysis of Smoothelin/SMTN using anti-Smoothelin/SMTN antibody (A04895). Electrophoresis was performed on a 5-20% SDS-PAGE gel at 70V (Stacking gel) / 90V (Resolving gel) for 2-3 hours. The sample well of each lane was loaded with 30 ug of sample under reducing conditions. Lane 1: human HeLa whole cell lysates, Lane 2: human COLO320 whole cell lysates, Lane 3: human SW620 whole cell lysates. After electrophoresis, proteins were transferred to a nitrocellulose membrane at 150 mA for 50-90 minutes. Blocked the membrane with 5% non-fat milk/TBS for 1.5 hour at RT. The membrane was incubated with rabbit anti-Smoothelin/SMTN antigen affinity purified polyclonal antibody (Catalog # A04895) at 0.5 ug/mL overnight at 4°C, then washed with TBS-0.1%Tween 3 times with 5 minutes each and probed with a goat anti-rabbit IgG-HRP secondary antibody at a dilution of 1:5000 for 1.5 hour at RT. The signal is developed using an Enhanced Chemiluminescent detection (ECL) kit (Catalog # EK1002) with Tanon 5200 system. A specific band was detected for Smoothelin/SMTN at approximately 120 kDa. The expected band size for Smoothelin/SMTN is at 99 kDa.

Submit a product review to [Biocompare.com](https://www.biocompare.com)

Submit a review of this product to [Biocompare.com](https://www.biocompare.com) to receive a \$20 Amazon.com giftcard! Your reviews help your fellow scientists make the right decisions. Thank you for your contribution.



Anti-Smoothelin/SMTN Antibody

For Research Use Only. Not for use in diagnostic procedures.