

Anti-PAK6 Antibody

Catalog Number: A04903

About PAK6

The p21-activated kinases (PAKs) are serine-threonine kinases that bind to the active forms of Cdc42 and Rac. They are divided into two groups, the first of which include PAK1, 2 and 3, and can be activated by Cdc42/Rac binding. Group 1 PAKs contain an autoinhibitory domain whose activity is regulated by Cdc42/Rac binding. The group 1 PAKs are known to be involved in cellular processes such as gene transcription, apoptosis, and cell morphology and motility. Much less is known about the second group, which includes PAK4, 5 and 6. These proteins are not activated by Cdc42/Rac binding. PAK6 was initially identified as an androgen receptor in a yeast two hybrid screen and was found to be highly expressed in testis and prostate tissues. Later experiments have shown it to be activated by MAP kinase kinase 6 and p38 MAP kinase, suggesting that PAK6 may play a role in the cellular response to stress-related signals.

Overview

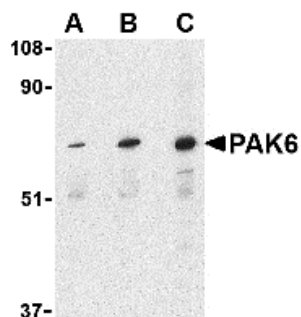
Product Name	Anti-PAK6 Antibody
Reactive Species	Human
Description	Boster Bio Anti-PAK6 Antibody (Catalog # A04903). Tested in ELISA, WB, ICC, IF applications. This antibody reacts with Human.
Application	ELISA, IF, ICC, WB
Clonality	Polyclonal
Formulation	PAK6 Antibody is supplied in PBS containing 0.02% sodium azide.
Storage Instructions	PAK6 antibody can be stored at 4°C for three months and -20°C, stable for up to one year. Avoid repeated freeze-thaw cycles. Antibodies should not be exposed to prolonged high temperatures.
Host	Rabbit
Uniprot ID	Q9NQ5

Technical Details

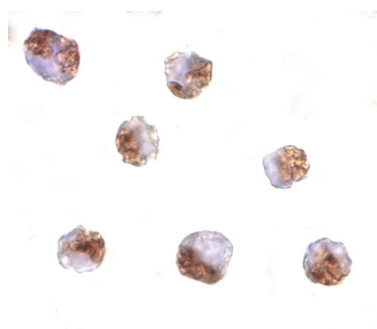
Immunogen	PAK6 antibody was raised against a 13 amino acid synthetic peptide from near the center of human PAK6. The immunogen is located within amino acids 260 - 310 of PAK6.
Predicted Reactive Species	Bovine
Cross Reactivity	PAK6 antibody is predicted to not cross-react with other PAK family proteins.
Isotype	IgG
Form	Liquid
Concentration	1 mg/mL

Purification	PAK6 Antibody is affinity chromatography purified via peptide column.
Suggested Dilutions	<p>Dilute the sample so that the expected range of concentrations fall within the detection range of this kit.</p> <p>If the expected range of concentration is unknown, a pilot test should be conducted to decide the optimal dilution ratio for your samples.</p> <p>Some PubMed article(s) citing the expression level of this target are as follows:</p> <p>Boster Bio's internal QC testing used:</p> <p>PAK6 antibody can be used for the detection of PAK6 by Western blot at 1 - 4 ug/mL. Antibody can also be used for immunocytochemistry starting at 10 ug/mL. For immunofluorescence start at 10 ug/mL.</p> <p>Antibody validated: Western Blot in human samples; Immunocytochemistry in human samples and Immunofluorescence in human samples. All other applications and species not yet tested. Optimal dilutions for each application should be determined by the researcher.</p>

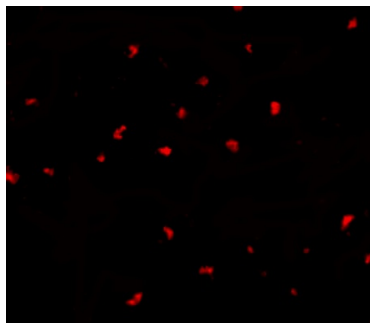
Anti-PAK6 Antibody (A04903) Images



Western blot analysis of PAK6 in Raji lysate with PAK6 antibody at (A) 1



Immunocytochemistry of PAK6 in Raji cells with PAK6 antibody at 10 ug/mL.



Immunofluorescence of PAK6 in Raji cells with PAK6 antibody at 10 ug/mL.

Submit a product review to Biocompare.com

Submit a review of this product to Biocompare.com to receive a \$20 Amazon.com giftcard! Your reviews help your fellow scientists make the right decisions. Thank you for your contribution.



Anti-PAK6 Antibody