

Anti-CARMA2 CARD14 Antibody

Catalog Number: A04906

About CARD14

CARMA proteins belong to the membrane-associated guan-ylate kinase-like (MAGUK) family of proteins that can function as molecular scaffolds that assist assembly of signal transduction molecules. CARMA1, CARMA2, and CARMA3 share high degrees of sequence and functional homology, but their tissue-specific distribution suggests that they serve distinct biological functions in different cell types. As with CARMA1, the CARD domain of CARMA2 has been shown to specifically interact with BCL10, a protein known to function as a positive regulator of cell apoptosis and NF-kappaB activation. When expressed in cells, this protein activated NF-kappaB and induced the phosphorylation of BCL10. Alternative splicing of CARMA2 results in isoforms that possess differential effects on NF-kappaB activation and endoplasmic reticulum stress-induced cell death.

Overview

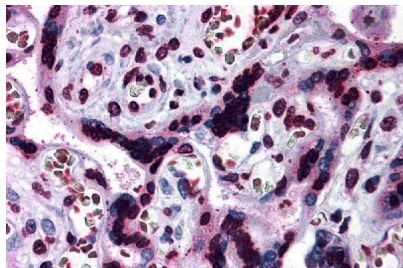
Product Name	Anti-CARMA2 CARD14 Antibody
Reactive Species	Human
Description	Boster Bio Anti-CARMA2 CARD14 Antibody (Catalog # A04906). Tested in ELISA, IHC-P applications. This antibody reacts with Human.
Application	ELISA, IHC-P
Clonality	Polyclonal
Formulation	CARMA2 Antibody is supplied in PBS containing 0.02% sodium azide.
Storage Instructions	CARMA2 antibody can be stored at 4°C for three months and -20°C, stable for up to one year. Avoid repeated freeze-thaw cycles. Antibodies should not be exposed to prolonged high temperatures.
Host	Rabbit
Uniprot ID	Q9BXL6

Technical Details

Immunogen	CARMA2 antibody was raised against a 14 amino acid synthetic peptide near the carboxy terminus of human CARMA2. The immunogen is located within the last 50 amino acids of CARMA2.
Predicted Reactive Species	Mouse
Cross Reactivity	CARMA2 antibody is human specific. At least three isoforms of CARMA2 are known to exist; this antibody will only detect isoform 1. CARMA2 antibody is predicted not to cross-react with other CARMA proteins.
Isotype	IgG
Form	Liquid

Concentration	1 mg/mL
Purification	CARMA2 Antibody is affinity chromatography purified via peptide column.
Suggested Dilutions	CARMA2 antibody can be used for detection of CARMA2 by immunohistochemistry at 5 ug/mL. Antibody validated: Immunohistochemistry in human samples. All other applications and species not yet tested. Optimal dilutions for each application should be determined by the researcher.

Anti-CARMA2 CARD14 Antibody (A04906) Images



Immunohistochemistry of CARMA2 in human placenta tissue with CARMA2 antibody at 5 ug/mL.

Submit a product review to [Biocompare.com](https://www.biocompare.com)

Submit a review of this product to [Biocompare.com](https://www.biocompare.com) to receive a \$20 Amazon.com giftcard! Your reviews help your fellow scientists make the right decisions. Thank you for your contribution.



Anti-CARMA2 CARD14 Antibody

For Research Use Only. Not for use in diagnostic procedures.