

## Anti-Protein Shroom3 SHROOM3 Antibody

Catalog Number: A04911

### About SHROOM3

SHROOM family members play diverse roles in the development of the nervous system and other tissues. SHROOM3 is an actin-binding protein is a regulator of the microtubule cytoskeleton during epithelial morphogenesis and is sufficient and necessary to induce a redistribution of the microtubule regulator gamma-tubulin. It is necessary for both apiscobasal cell elongation and apical constriction in the neural epithelium. SHROOM3 has also been shown to be essential for cell shape changes and morphogenesis in the developing vertebrate gut, with its transcription relying on the Pitx1 transcription factor.

### Overview

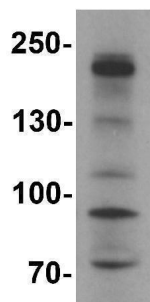
Product Name	Anti-Protein Shroom3 SHROOM3 Antibody
Reactive Species	Human
Description	Boster Bio Anti-Protein Shroom3 SHROOM3 Antibody (Catalog # A04911). Tested in ELISA, WB applications. This antibody reacts with Human.
Application	ELISA, WB
Clonality	Polyclonal
Formulation	SHROOM3 Antibody is supplied in PBS containing 0.02% sodium azide.
Storage Instructions	SHROOM3 antibody can be stored at 4°C for three months and -20°C, stable for up to one year. Avoid repeated freeze-thaw cycles. Antibodies should not be exposed to prolonged high temperatures.
Host	Rabbit
Uniprot ID	Q8TF72

### Technical Details

Immunogen	Rabbit polyclonal SHROOM3 antibody was raised against an 18 amino acid peptide near the center of human SHROOM3. The immunogen is located within amino acids 850 - 900 of SHROOM3.
Predicted Reactive Species	Mouse
Cross Reactivity	SHROOM3 antibody is human specific. At least four isoforms of SHROOM3 are known to exist; this antibody will detect all four isoforms. SHROOM3 antibody is predicted to not cross-react with other SHROOM family members.
Isotype	IgG
Form	Liquid
Concentration	1 mg/mL

Purification	SHROOM3 Antibody is affinity chromatography purified via peptide column.
Suggested Dilutions	SHROOM3 antibody can be used for detection of SHROOM3 by Western blot at 1 - 2 ug/mL. Antibody validated: Western Blot in human samples. All other applications and species not yet tested. Optimal dilutions for each application should be determined by the researcher.

## Anti-Protein Shroom3 SHROOM3 Antibody (A04911) Images



◀ **SHROOM3**

Western blot analysis of SHROOM3 in SK-N-SH cell lysate with SHROOM3 antibody at 1 ug/mL.

### Submit a product review to Biocompare.com

Submit a review of this product to Biocompare.com to receive a \$20 Amazon.com giftcard! Your reviews help your fellow scientists make the right decisions. Thank you for your contribution.



Anti-Protein Shroom3 SHROOM3 Antibody

For Research Use Only. Not for use in diagnostic procedures.