

Anti-SLC22A3 Antibody Picoband®

Catalog Number: A04914-1

About SLC22A3

Solute carrier family 22 (extraneuronal monoamine transporter), member 3, also known as SLC22A3 or OCT3 is a protein that in humans is encoded by the SLC22A3 gene. This gene is mapped to 6q25.3. Polyspecific organic cation transporters in the liver, kidney, intestine, and other organs are critical for elimination of many endogenous small organic cations as well as a wide array of drugs and environmental toxins. This gene mediates potential-dependent transport of a variety of organic cations. It may play a significant role in the disposition of cationic neurotoxins and neurotransmitters in the brain.

Overview

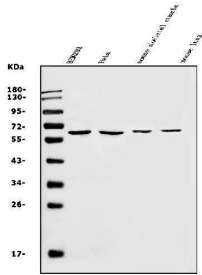
Product Name	Anti-SLC22A3 Antibody Picoband®
Reactive Species	Human, Mouse
Description	Boster Bio Anti-SLC22A3 Antibody Picoband® catalog # A04914-1. Tested in Flow Cytometry, WB applications. This antibody reacts with Human, Mouse. The brand Picoband indicates this is a premium antibody that guarantees superior quality, high affinity, and strong signals with minimal background in Western blot applications. Only our best-performing antibodies are designated as Picoband, ensuring unmatched performance.
Application	Flow Cytometry, WB
Clonality	Polyclonal
Formulation	Each vial contains 4mg Trehalose, 0.9mg NaCl, 0.2mg Na2HPO4, 0.01mg NaN3.
Storage Instructions	Store at -20°C for one year from date of receipt. After reconstitution, at 4°C for one month. It can also be aliquotted and stored frozen at -20°C for six months. Avoid repeated freeze-thaw cycles.
Host	Rabbit
Uniprot ID	O75751

Technical Details

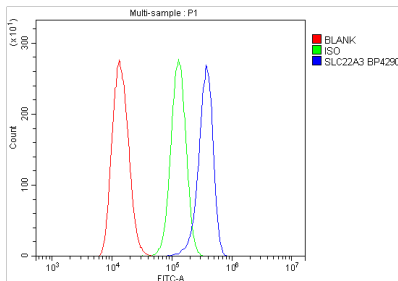
Immunogen	A synthetic peptide corresponding to a sequence at the N-terminus of human SLC22A3, which shares 76.5% amino acid (aa) sequence identity with both mouse and rat SLC22A3.
Recommended Detection Systems	Boster recommends Enhanced Chemiluminescent Kit with anti-Rabbit IgG (EK1002) for Western blot.
Cross Reactivity	No cross-reactivity with other proteins.
Isotype	Rabbit IgG
Form	Lyophilized

Concentration	Adding 0.2 ml of distilled water will yield a concentration of 500 ug/ml.
Purification	Immunogen affinity purified.
Suggested Dilutions	Western blot, 0.25-0.5ug/ml, Human, Mouse Flow Cytometry (Fixed), 1-3ug/1x10 ⁶ cells, Human

Anti-SLC22A3 Antibody Picoband® (A04914-1) Images



Western blot analysis of SLC22A3 using anti-SLC22A3 antibody (A04914-1). Electrophoresis was performed on a 5-20% SDS-PAGE gel at 70V (Stacking gel) / 90V (Resolving gel) for 2-3 hours. The sample well of each lane was loaded with 50ug of sample under reducing conditions. Lane 1: human HEK293 whole cell lysates, Lane 2: human Hela whole cell lysates, Lane 3: mouse skeletal muscle tissue lysates, Lane 4: mouse lung tissue lysates. After Electrophoresis, proteins were transferred to a Nitrocellulose membrane at 150mA for 50-90 minutes. Blocked the membrane with 5% Non-fat Milk/ TBS for 1.5 hour at RT. The membrane was incubated with rabbit anti-SLC22A3 antigen affinity purified polyclonal antibody (Catalog # A04914-1) at 0.5 ug/mL overnight at 4°C, then washed with TBS-0.1%Tween 3 times with 5 minutes each and probed with a goat anti-rabbit IgG-HRP secondary antibody at a dilution of 1:5000 for 1.5 hour at RT. The signal is developed using an Enhanced Chemiluminescent detection (ECL) kit (Catalog # EK1002) with Tanon 5200 system. A specific band was detected for SLC22A3 at approximately 61KD. The expected band size for SLC22A3 is at 61KD.



Flow Cytometry analysis of Hela cells using anti-SLC22A3 antibody (A04914-1). Overlay histogram showing Hela cells stained with A04914-1 (Blue line). To facilitate intracellular staining, cells were fixed with 4% paraformaldehyde and permeabilized with permeabilization buffer. The cells were blocked with 10% normal goat serum. And then incubated with rabbit anti-SLC22A3 Antibody (A04914-1, 1ug/1x10⁶ cells) for 30 min at 20°C. DyLight®488 conjugated goat anti-rabbit IgG (BA1127, 5-10ug/1x10⁶ cells) was used as secondary antibody for 30 minutes at 20°C. Isotype control antibody (Green line) was rabbit IgG (1ug/1x10⁶) used under the same conditions. Unlabelled sample without incubation with primary antibody and secondary antibody (Red line) was used as a blank control.

Submit a product review to [Biocompare.com](https://www.biocompare.com)

Submit a review of this product to [Biocompare.com](https://www.biocompare.com) to receive a \$20 Amazon.com giftcard! Your reviews help your fellow scientists make the right decisions. Thank you for your contribution.



Anti-SLC22A3 Antibody

For Research Use Only. Not for use in diagnostic procedures.