

Anti-LOC134147/CMBL Antibody Picoband®

Catalog Number: A04921-1

About CMBL

CMBL is a cysteine hydrolase of the diene lactone hydrolase family that is highly expressed in liver cytosol. CMBL preferentially cleaves cyclic esters, and it activates medoxomil-ester prodrugs in which the medoxomil moiety is linked to an oxygen atom.

Overview

Product Name	Anti-LOC134147/CMBL Antibody Picoband®
Reactive Species	Human, Mouse, Rat
Description	Boster Bio Anti-LOC134147/CMBL Antibody Picoband® catalog # A04921-1. Tested in ELISA, Flow Cytometry, IHC, WB applications. This antibody reacts with Human, Mouse, Rat. The brand Picoband indicates this is a premium antibody that guarantees superior quality, high affinity, and strong signals with minimal background in Western blot applications. Only our best-performing antibodies are designated as Picoband, ensuring unmatched performance.
Application	ELISA, Flow Cytometry, IHC, WB
Clonality	Polyclonal
Formulation	Each vial contains 4mg Trehalose, 0.9mg NaCl, 0.2mg Na ₂ HPO ₄ , 0.01mg NaN ₃ .
Storage Instructions	Store at -20°C for one year from date of receipt. After reconstitution, at 4°C for one month. It can also be aliquotted and stored frozen at -20°C for six months. Avoid repeated freeze-thaw cycles.
Host	Rabbit
Uniprot ID	Q96DG6

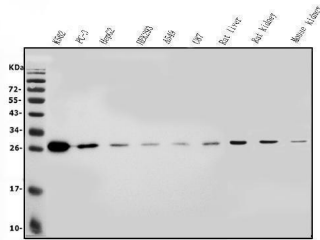
Technical Details

Immunogen	E.coli-derived human LOC134147/CMBL recombinant protein (Position: M1-M245).
Recommended Detection Systems	Boster recommends Enhanced Chemiluminescent Kit with anti-Rabbit IgG (EK1002) for Western blot, and HRP Conjugated anti-Rabbit IgG Super Vision Assay Kit (SV0002-1) for IHC(P).
Cross Reactivity	No cross-reactivity with other proteins.
Isotype	Rabbit IgG
Form	Lyophilized
Concentration	Adding 0.2 ml of distilled water will yield a concentration of 500 ug/ml.
Purification	Immunogen affinity purified.

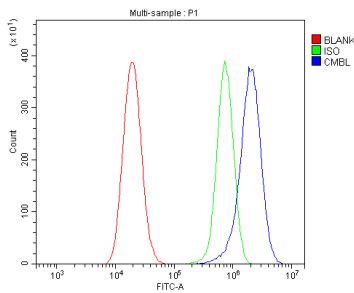
Suggested Dilutions

Western blot, 0.1-0.25ug/ml, Human, Mouse, Rat
Immunohistochemistry (Paraffin-embedded Section), 2-5ug/ml, Human
Flow Cytometry (Fixed), 1-3ug/1x10⁶ cells, Human
ELISA, 0.1-0.5ug/ml, -

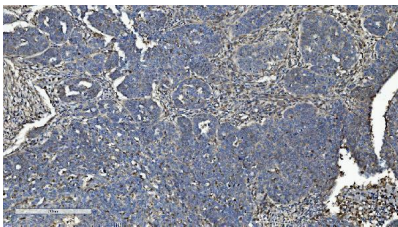
Anti-LOC134147/CMBL Antibody Picoband® (A04921-1) Images



Western blot analysis of LOC134147/CMBL using anti-LOC134147/CMBL antibody (A04921-1). Electrophoresis was performed on a 5-20% SDS-PAGE gel at 70V (Stacking gel) / 90V (Resolving gel) for 2-3 hours. The sample well of each lane was loaded with 50ug of sample under reducing conditions. Lane 1: human K562 whole cell lysates, Lane 2: human PC-3 whole cell lysates, Lane 3: human HepG2 whole cell lysates, Lane 4: human HEK293 whole cell lysates, Lane 5: human A549 whole cell lysates, Lane 6: human U87 whole cell lysates, Lane 7: rat liver tissue lysates, Lane 8: rat kidney tissue lysates, Lane 9: mouse kidney tissue lysates. After Electrophoresis, proteins were transferred to a Nitrocellulose membrane at 150mA for 50-90 minutes. Blocked the membrane with 5% Non-fat Milk/ TBS for 1.5 hour at RT. The membrane was incubated with rabbit anti-LOC134147/CMBL antigen affinity purified polyclonal antibody (Catalog # A04921-1) at 0.25 ug/mL overnight at 4°C, then washed with TBS-0.1%Tween 3 times with 5 minutes each and probed with a goat anti-rabbit IgG-HRP secondary antibody at a dilution of 1:5000 for 1.5 hour at RT. The signal is developed using an Enhanced Chemiluminescent detection (ECL) kit (Catalog # EK1002) with Tanon 5200 system. A specific band was detected for LOC134147/CMBL at approximately 28KD. The expected band size for LOC134147/CMBL is at 28KD.

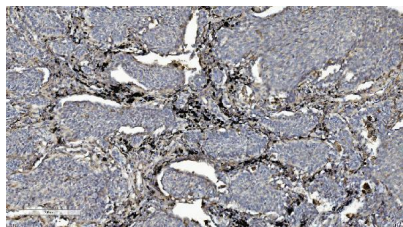


Flow Cytometry analysis of U2OS cells using anti-LOC134147/CMBL antibody (A04921-1). Overlay histogram showing U2OS cells stained with A04921-1 (Blue line). To facilitate intracellular staining, cells were fixed with 4% paraformaldehyde and permeabilized with permeabilization buffer. The cells were blocked with 10% normal goat serum. And then incubated with rabbit anti-LOC134147/CMBL Antibody (A04921-1, 1ug/1x10⁶ cells) for 30 min at 20°C. DyLight®488 conjugated goat anti-rabbit IgG (BA1127, 5-10ug/1x10⁶ cells) was used as secondary antibody for 30 minutes at 20°C. Isotype control antibody (Green line) was rabbit IgG (1ug/1x10⁶) used under the same conditions. Unlabelled sample without incubation with primary antibody and secondary antibody (Red line) was used as a blank control.

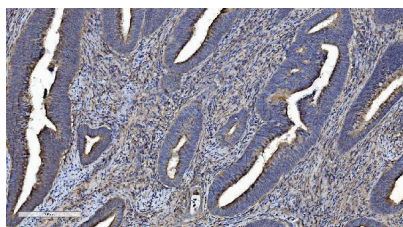


IHC analysis of LOC134147/CMBL using anti-LOC134147/CMBL antibody (A04921-1). LOC134147/CMBL was detected in paraffin-embedded section of human adnexal serous adenocarcinoma tissue. Heat mediated antigen retrieval was performed in EDTA buffer (pH8.0, epitope retrieval solution). The tissue section was blocked with 10% goat serum. The tissue section was then incubated with 2ug/ml rabbit anti-LOC134147/CMBL Antibody (A04921-1) overnight at 4°C. Biotinylated goat anti-rabbit IgG was used as secondary antibody and incubated for 30 minutes at 37°C. The tissue section was developed using

Streptavidin-Biotin-Complex (SABC) (Catalog # SA1022) with DAB as the chromogen.



IHC analysis of LOC134147/CMBL using anti-LOC134147/CMBL antibody (A04921-1). LOC134147/CMBL was detected in paraffin-embedded section of human lung cancer tissue. Heat mediated antigen retrieval was performed in EDTA buffer (pH8.0, epitope retrieval solution). The tissue section was blocked with 10% goat serum. The tissue section was then incubated with 2ug/ml rabbit anti-LOC134147/CMBL Antibody (A04921-1) overnight at 4°C. Biotinylated goat anti-rabbit IgG was used as secondary antibody and incubated for 30 minutes at 37°C. The tissue section was developed using Streptavidin-Biotin-Complex (SABC) (Catalog # SA1022) with DAB as the chromogen.



IHC analysis of LOC134147/CMBL using anti-LOC134147/CMBL antibody (A04921-1). LOC134147/CMBL was detected in paraffin-embedded section of human colorectal cancer tissue. Heat mediated antigen retrieval was performed in EDTA buffer (pH8.0, epitope retrieval solution). The tissue section was blocked with 10% goat serum. The tissue section was then incubated with 2ug/ml rabbit anti-LOC134147/CMBL Antibody (A04921-1) overnight at 4°C. Biotinylated goat anti-rabbit IgG was used as secondary antibody and incubated for 30 minutes at 37°C. The tissue section was developed using Streptavidin-Biotin-Complex (SABC) (Catalog # SA1022) with DAB as the chromogen.

Submit a product review to [Biocompare.com](https://www.biocompare.com)

Submit a review of this product to [Biocompare.com](https://www.biocompare.com) to receive a \$20 Amazon.com giftcard! Your reviews help your fellow scientists make the right decisions. Thank you for your contribution.



Anti-LOC134147/CMBL Antibody

For Research Use Only. Not for use in diagnostic procedures.