

Anti-Meckel syndrome type 1 protein MKS1 Antibody

Catalog Number: A04925

About MKS1

Receptor for class I MHC antigens. Recognizes a broad spectrum of HLA-A, HLA-B, HLA-C and HLA-G alleles. Involved in the down-regulation of the immune response and the development of tolerance, e.g. towards transplants. Interferes with TNFRSF5-signaling and NF-kappa-B up-regulation. Inhibits receptor-mediated phosphorylation of cellular proteins and mobilization of intracellular calcium ions.

Arm J.P., J. Immunol. 159:2342-2349(1997).

Borges L., J. Immunol. 159:5192-5196(1997).

Liu W.R., Immunogenetics 51:659-669(2000).

Overview

Product Name	Anti-Meckel syndrome type 1 protein MKS1 Antibody
Reactive Species	Human, Mouse, Rat
Description	Boster Bio Anti-Meckel syndrome type 1 protein MKS1 Antibody catalog # A04925. Tested in WB,IF applications. This antibody reacts with Human,Mouse,Rat.
Application	IF, WB
Clonality	Polyclonal
Formulation	Rabbit IgG, 1mg/ml in PBS with 0.02% sodium azide, 50% glycerol, pH7.2
Storage Instructions	Store at -20°C for one year. For short term storage and frequent use, store at 4°C for up to one month. Avoid repeated freeze-thaw cycles.
Host	Rabbit
Uniprot ID	Q9NXB0

Technical Details

Immunogen	Synthesized peptide derived from internal of human LILRB4.
Predicted Reactive Species	Boar, Bovine, Canine, Golden Hamster
Isotype	IgG
Form	Liquid
Concentration	1 mg/ml
Purification	The antibody was affinity-purified from rabbit antiserum by affinity-chromatography using epitope-specific immunogen and the purity is > 95% (by SDS-PAGE).

Suggested Dilutions

Dilute the sample so that the expected range of concentrations fall within the detection range of this kit.

If the expected range of concentration is unknown, a pilot test should be conducted to decide the optimal dilution ratio for your samples.

Some PubMed article(s) citing the expression level of this target are as follows:

Boster Bio's internal QC testing used:

WB: 1:500-1:2000

IF: 1:50-1:200

Anti-Meckel syndrome type 1 protein MKS1 Antibody (A04925) Images

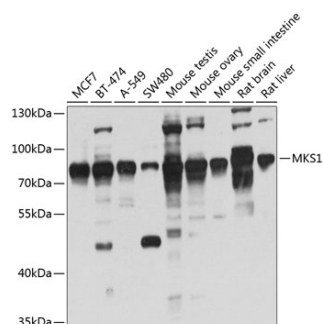


Figure 1. Western blotting validation for Anti-Meckel syndrome type 1 protein MKS1 Antibody A04925

Western blot analysis of extract of various cells

Submit a product review to Biocompare.com

Submit a review of this product to Biocompare.com to receive a \$20 Amazon.com giftcard! Your reviews help your fellow scientists make the right decisions. Thank you for your contribution.



Anti-Meckel syndrome type 1 protein MKS1 Antibody