

Anti-SLC14A1/UTE Antibody Picoband®

Catalog Number: A04926-1

About Slc14a1

Urea transporter 1 is a protein that in humans is encoded by the SLC14A1 gene. The SLC14A1 codes for a urea transporter (UTB) that is expressed in erythrocytes and kidney. SLC14A2 and SLC14A1 constitute solute carrier family 14. UTB proteins constitute the Kidd antigen system.

Overview

Product Name	Anti-SLC14A1/UTE Antibody Picoband®
Reactive Species	Human, Mouse, Rat
Description	Boster Bio Anti-SLC14A1/UTE Antibody Picoband® catalog # A04926-1. Tested in Flow Cytometry, WB applications. This antibody reacts with Human, Mouse, Rat. The brand Picoband indicates this is a premium antibody that guarantees superior quality, high affinity, and strong signals with minimal background in Western blot applications. Only our best-performing antibodies are designated as Picoband, ensuring unmatched performance.
Application	Flow Cytometry, WB
Clonality	Polyclonal
Formulation	Each vial contains 4mg Trehalose, 0.9mg NaCl, 0.2mg Na ₂ HPO ₄ , 0.01mg NaN ₃ .
Storage Instructions	Store at -20°C for one year from date of receipt. After reconstitution, at 4°C for one month. It can also be aliquotted and stored frozen at -20°C for six months. Avoid repeated freeze-thaw cycles.
Host	Rabbit
Uniprot ID	Q8VHL0

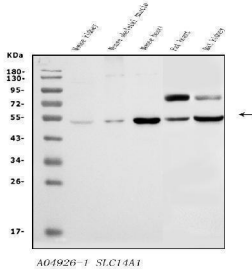
Technical Details

Immunogen	A synthetic peptide corresponding to a sequence at the C-terminus of human SCEL, identical to the related mouse and rat sequences.
Recommended Detection Systems	Boster recommends Enhanced Chemiluminescent Kit with anti-Rabbit IgG (EK1002) for Western blot.
Cross Reactivity	No cross-reactivity with other proteins.
Isotype	Rabbit IgG
Form	Lyophilized
Concentration	Adding 0.2 ml of distilled water will yield a concentration of 500 ug/ml.
Purification	Immunogen affinity purified.

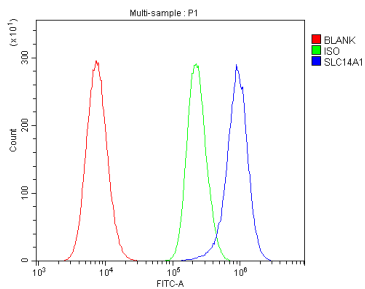
Suggested Dilutions

Western blot, 0.25-0.5ug/ml, Mouse, Rat
Flow Cytometry (Fixed), 1-3ug/1x10⁶ cells, Mouse

Anti-SLC14A1/UTE Antibody Picoband® (A04926-1) Images



Western blot analysis of SLC14A1/UTE using anti-SLC14A1/UTE antibody (A04926-1). Electrophoresis was performed on a 5-20% SDS-PAGE gel at 70V (Stacking gel) / 90V (Resolving gel) for 2-3 hours. The sample well of each lane was loaded with 50ug of sample under reducing conditions. Lane 1: mouse kidney tissue lysates, Lane 2: mouse skeletal muscle tissue lysates, Lane 3: mouse heart tissue lysates, Lane 4: rat heart tissue lysates, Lane 5: rat kidney tissue lysates. After Electrophoresis, proteins were transferred to a Nitrocellulose membrane at 150mA for 50-90 minutes. Blocked the membrane with 5% Non-fat Milk/TBS for 1.5 hour at RT. The membrane was incubated with rabbit anti-SLC14A1/UTE antigen affinity purified polyclonal antibody (Catalog # A04926-1) at 0.5 ug/mL overnight at 4°C, then washed with TBS-0.1%Tween 3 times with 5 minutes each and probed with a goat anti-rabbit IgG-HRP secondary antibody at a dilution of 1:5000 for 1.5 hour at RT. The signal is developed using an Enhanced Chemiluminescent detection (ECL) kit (Catalog # EK1002) with Tanon 5200 system. A specific band was detected for SLC14A1/UTE at approximately 48-50KD. The expected band size for SLC14A1/UTE is at 42KD.



Flow Cytometry analysis of HEPA1-6 cells using anti-SLC14A1/UTE antibody (A04926-1). Overlay histogram showing HEPA1-6 cells stained with A04926-1 (Blue line). The cells were fixed with 4% paraformaldehyde and blocked with 10% normal goat serum. And then incubated with rabbit anti-SLC14A1/UTE Antibody (A04926-1, 1ug/1x10⁶ cells) for 30 min at 20°C. DyLight®488 conjugated goat anti-rabbit IgG (BA1127, 5-10ug/1x10⁶ cells) was used as secondary antibody for 30 minutes at 20°C. Isotype control antibody (Green line) was rabbit IgG (1ug/1x10⁶) used under the same conditions. Unlabelled sample without incubation with primary antibody and secondary antibody (Red line) was used as a blank control.

1 Publications Citing This Product

1. PubMed ID: -, Matthew D. Regan,Edna Chiang,Yunxi Liu,Marco Tonelli,Kristen M. Verdoorn,Sadie R. Gugel,Garret Suen,Hannah V. Carey,Fariba M. Assadi-Porter bioRxiv 2021.02.24.432731;doi:https://doi.org/10.1101/2021.02.24.432731

Visit bosterbio.com/anti-slc14a1-ute-picoband-trade-antibody-a04926-1-boster.html to see all 1 publications.

Submit a product review to Biocompare.com

Submit a review of this product to Biocompare.com to receive a \$20 Amazon.com giftcard! Your reviews help your fellow scientists make the right decisions. Thank you for your contribution.



Anti-SLC14A1/UTE Antibody

For Research Use Only. Not for use in diagnostic procedures.