

## Anti-CRYBB2 Antibody (N-term)

Catalog Number: A04928

### About CRYBB2

Crystallins are the dominant structural components of the vertebrate eye lens.

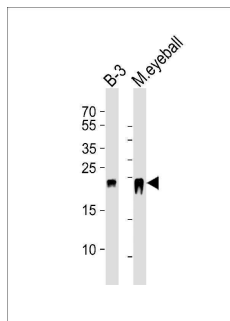
### Overview

Product Name	Anti-CRYBB2 Antibody (N-term)
Reactive Species	Human
Description	Boster Bio Anti-CRYBB2 Antibody (N-term) (Catalog # A04928). Tested in WB application(s). This antibody reacts with Human.
Application	WB
Clonality	Polyclonal
Formulation	Purified polyclonal antibody supplied in PBS with 0.09% (W/V) sodium azide.
Storage Instructions	Maintain refrigerated at 2-8°C for up to 2 weeks. For long-term storage, store at -20°C in small aliquots to prevent freeze-thaw cycles.
Host	Rabbit
Uniprot ID	P43320

### Technical Details

Immunogen	This CRYBB2 antibody is generated from a rabbit immunized with a KLH conjugated synthetic peptide between 4-36 amino acids from the N-terminal region of human CRYBB2.
Predicted Reactive Species	Bovine, Mouse
Isotype	Rabbit IgG
Purification	This antibody is purified through a protein A column, followed by peptide affinity purification.
Suggested Dilutions	WB: 1:1000

## Anti-CRYBB2 Antibody (N-term) (A04928) Images



Western blot analysis of lysates from B-3 cell line and mouse eyeball tissue lysate (from left to right), using CRYBB2 Antibody (N-term). A04928 was diluted at 1:1000 at each lane. A goat anti-rabbit IgG H&L (HRP) at 1:5000 dilution was used as the secondary antibody. Lysates at 35ug per lane.

### Submit a product review to Biocompare.com

Submit a review of this product to Biocompare.com to receive a \$20 Amazon.com giftcard! Your reviews help your fellow scientists make the right decisions. Thank you for your contribution.



Anti-CRYBB2 Antibody (N-term)

For Research Use Only. Not for use in diagnostic procedures.