

Anti-LEMD3 Antibody

Catalog Number: A04957

About LEMD3

LEMD3 (LEM domain-containing 3) is a lem-domain containing protein, also known as MAN1, whose loss of function results in disorders characterized by osteopoikilosis, Buschke-Ollendorff syndrome, and melorheostosis. LEMD3 is an inner nuclear membrane protein that interacts with BMP and activin-TGF-beta receptor-activated Smads and antagonizes TGF-beta signaling in human cells.

Overview

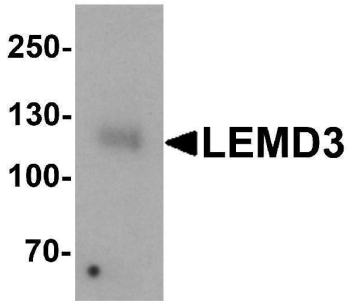
Product Name	Anti-LEMD3 Antibody
Reactive Species	Human, Mouse
Description	Boster Bio Anti-LEMD3 Antibody (Catalog # A04957). Tested in ELISA, WB, IHC-P, IF applications. This antibody reacts with Human, Mouse.
Application	ELISA, IF, IHC-P, WB
Clonality	Polyclonal
Formulation	LEMD3 Antibody is supplied in PBS containing 0.02% sodium azide.
Storage Instructions	Antibody can be stored at 4°C up to one year. Antibodies should not be exposed to prolonged high temperatures.
Host	Rabbit
Uniprot ID	Q9Y2U8

Technical Details

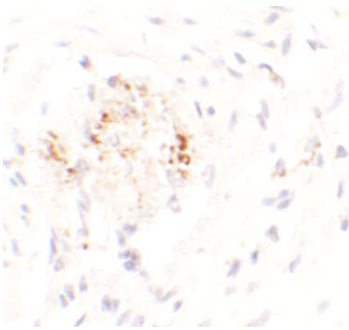
Immunogen	LEMD3 antibody was raised against an 18 amino acid synthetic peptide near the carboxy terminus of human LEMD3. The immunogen is located within the last 50 amino acids of LEMD3.
Predicted Reactive Species	Guinea Pig, Rabbit, Rat
Cross Reactivity	At least three isoforms of LEMD3 are known to exist; this antibody will detect all isoforms. LEMD3 antibody is predicted to not cross-react with LEMD1 and LEMD2
Isotype	IgG
Form	Liquid
Concentration	1 mg/mL
Purification	LEMD3 Antibody is affinity chromatography purified via peptide column.
Suggested Dilutions	LEMD3 antibody can be used for detection of LEMD3 by Western blot at 1 ug/mL. Antibody can also

be used for immunohistochemistry starting at 2.5 ug/mL. For immunofluorescence start at 5 ug/mL. Antibody validated: Western Blot in human samples; Immunohistochemistry in human samples and Immunofluorescence in human samples. All other applications and species not yet tested. Optimal dilutions for each application should be determined by the researcher.

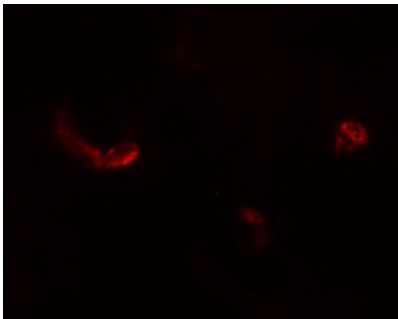
Anti-LEMD3 Antibody (A04957) Images



Western blot analysis of LEMD3 in human colon tissue lysate with LEMD3 antibody at 1 ug/mL.



Immunohistochemistry of LEMD3 in human colon tissue with LEMD3 antibody at 2.5 ug/mL.



Immunofluorescence of LEMD3 in human colon tissue with LEMD3 antibody at 5 ug/mL.

Submit a product review to [Biocompare.com](https://www.biocompare.com)

Submit a review of this product to [Biocompare.com](https://www.biocompare.com) to receive a \$20 Amazon.com giftcard! Your reviews help your fellow scientists make the right decisions. Thank you for your contribution.



Anti-LEMD3 Antibody

For Research Use Only. Not for use in diagnostic procedures.