

## Anti-NR1D2 Antibody (Center)

Catalog Number: A04958-1

### About NR1D2

This gene encodes a member of the nuclear hormone receptor family, specifically the NR1 subfamily of receptors. The encoded protein functions as a transcriptional repressor and may play a role in circadian rhythms and carbohydrate and lipid metabolism. Alternatively spliced transcript variants have been described.

### Overview

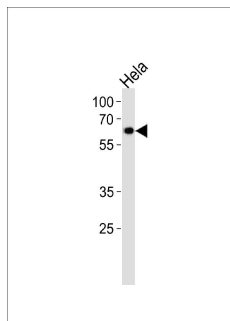
Product Name	Anti-NR1D2 Antibody (Center)
Reactive Species	Human
Description	Boster Bio Anti-NR1D2 Antibody (Center) (Catalog # A04958-1). Tested in WB, IHC-P application(s). This antibody reacts with Human.
Application	IHC-P, WB
Clonality	Polyclonal
Formulation	Purified polyclonal antibody supplied in PBS with 0.09% (W/V) sodium azide.
Storage Instructions	Maintain refrigerated at 2-8°C for up to 2 weeks. For long-term storage, store at -20°C in small aliquots to prevent freeze-thaw cycles.
Host	Rabbit
Uniprot ID	Q14995

### Technical Details

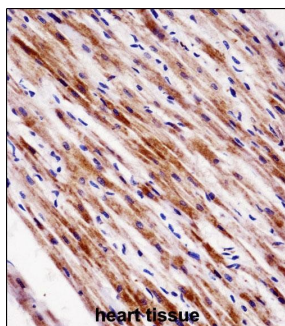
Immunogen	This NR1D2 antibody is generated from rabbits immunized with a KLH conjugated synthetic peptide between 266-294 amino acids from the Central region of human NR1D2.
Predicted Reactive Species	Bovine, Mouse
Isotype	Rabbit IgG
Purification	This antibody is purified through a protein A column, followed by peptide affinity purification.
Suggested Dilutions	Dilute the sample so that the expected range of concentrations fall within the detection range of this kit. If the expected range of concentration is unknown, a pilot test should be conducted to decide the optimal dilution ratio for your samples. Some PubMed article(s) citing the expression level of this target are as follows: Boster Bio's internal QC testing used: WB: 1:1000 IHC-P: 1:10-1:50



## Anti-NR1D2 Antibody (Center) (A04958-1) Images



NR1D2 Antibody (Center) western blot analysis in HeLa cell line lysates (35ug/lane). This demonstrates the NR1D2 antibody detected the NR1D2 protein (arrow).



NR1D2 Antibody (Center) (A04958-1) immunohistochemistry analysis in formalin fixed and paraffin embedded human heart tissue followed by peroxidase conjugation of the secondary antibody and DAB staining. This data demonstrates the use of NR1D2 Antibody (Center) for immunohistochemistry. Clinical relevance has not been evaluated.

## Submit a product review to Biocompare.com

Submit a review of this product to Biocompare.com to receive a \$20 Amazon.com giftcard! Your reviews help your fellow scientists make the right decisions. Thank you for your contribution.



Anti-NR1D2 Antibody (Center)