

Anti-EP2 PTGER2 Antibody

Catalog Number: A04963-1

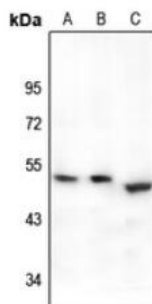
Overview

Product Name	Anti-EP2 PTGER2 Antibody
Reactive Species	Human, Mouse, Rat
Description	Boster Bio Anti-EP2 PTGER2 Antibody catalog # A04963-1. Tested in WB,IHC,IF applications. This antibody reacts with Human,Mouse,Rat.
Application	IF, IHC, WB
Clonality	Polyclonal
Formulation	Rabbit IgG, 1mg/ml in PBS with 0.02% sodium azide, 50% glycerol, pH7.2
Storage Instructions	Store at -20°C for one year. For short term storage and frequent use, store at 4°C for up to one month. Avoid repeated freeze-thaw cycles.
Host	Rabbit
Uniprot ID	P43116

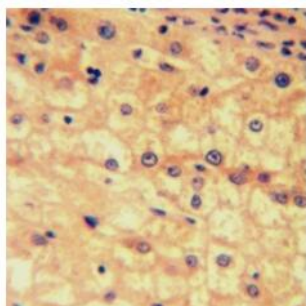
Technical Details

Immunogen	KLH-conjugated synthetic peptide encompassing a sequence within the C-term region of human EP2.
Isotype	IgG
Form	Liquid
Concentration	1 mg/ml
Purification	The antibody was affinity-purified from rabbit antiserum by affinity-chromatography using epitope-specific immunogen and the purity is > 95% (by SDS-PAGE).
Suggested Dilutions	WB: 1:500-1:2000 IHC: 1:50-1:200 IF: 1:100-1:200

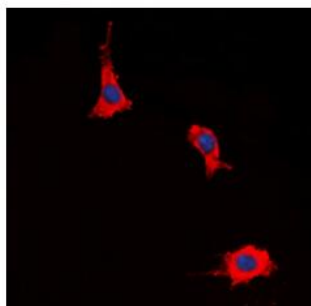
Anti-EP2 PTGER2 Antibody (A04963-1) Images



Western blot analysis of EP2 expression in A549 (A), HEK293T (B), mouse lung (C) whole cell lysates.



Immunohistochemical analysis of EP2 staining in human liver cancer formalin fixed paraffin embedded tissue section.



Immunofluorescent analysis of EP2 staining in HeLa cells.

Submit a product review to [Biocompare.com](https://www.biocompare.com)

Submit a review of this product to [Biocompare.com](https://www.biocompare.com) to receive a \$20 Amazon.com giftcard! Your reviews help your fellow scientists make the right decisions. Thank you for your contribution.



Anti-EP2 PTGER2 Antibody

For Research Use Only. Not for use in diagnostic procedures.