

Anti-p28 ING5 Antibody

Catalog Number: A04974

About ING5

p28 ING5 is a tumor suppressor protein similar to ING1 that can interact with TP53, inhibit cell growth, and induce apoptosis. This protein contains a PHD-finger, which is a common motif in proteins involved in chromatin remodeling. This protein can bind TP53 and EP300/p300, a component of the histone acetyl transferase complex, suggesting its involvement in TP53-dependent regulatory pathway. Multiple alternatively spliced transcript variants have been observed. The accession number listed below is for variant (1) encodes the longest isoform.

Overview

Product Name	Anti-p28 ING5 Antibody
Reactive Species	Human
Description	Boster Bio Anti-p28 ING5 Antibody (Catalog # A04974). Tested in ELISA, WB applications. This antibody reacts with Human.
Application	ELISA, WB
Clonality	Polyclonal
Formulation	0.02 M Potassium Phosphate, 0.15 M Sodium Chloride, pH 7.2, 0.01% (w/v) Sodium Azide
Storage Instructions	Store vial at -20°C prior to opening. Aliquot contents and freeze at -20°C or below for extended storage. Avoid cycles of freezing and thawing. Centrifuge product if not completely clear after standing at room temperature. This product is stable for several weeks at 4°C as an undiluted liquid. Dilute only prior to immediate use. Expiration date is one (1) year from date of opening. (Ship on dry ice.)
Host	Goat
Uniprot ID	Q8WYH8

Technical Details

Immunogen	This affinity purified antibody was prepared from whole goat serum produced by repeated immunizations with a synthetic peptide corresponding to an internal region near aa 125-150 of Human p28 ING5 protein (Inhibitor of growth family, member 5).
Predicted Reactive Species	Bovine, Chicken, Chimpanzee
Isotype	IgG
Form	Liquid (sterile filtered)
Concentration	1.52 mg/mL by UV absorbance at 280 nm
Purification	This is an affinity purified antibody produced by immunoaffinity chromatography using the

immunizing peptide after immobilization to a solid phase. Reactivity occurs against human p28 ING5 protein. The sequence is present in both isoforms 1 and 2. However, 100% homology is on record for this protein from human and chimpanzee. Cross-reactivity with p28 ING5 protein from frog, mouse, rat and chicken may not occur as sequence homology varies by one or more amino acids residues in this sequence as indicated by BLAST analysis. Reactivity with p28 ING5 proteins from other sources is not known.

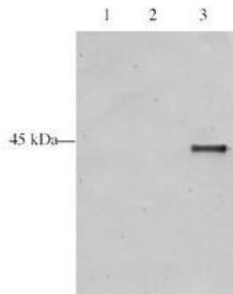
Suggested Dilutions

ELISA: 1:4,000 - 1:16,000

WB: 1:500 - 1:1,000

This affinity purified antibody has been tested for use in ELISA and by western blot. Specific conditions for reactivity should be optimized by the end user. Expect a band approximately 28 kDa or 26 kDa in size corresponding to variants of ING5 by western blotting in the appropriate cell lysate or extract.

Anti-p28 ING5 Antibody (A04974) Images



Western blot analysis is shown using Boster's Affinity Purified anti-p28 ING5 antibody to detect over expressed Human ING5 present in HeLa cell nuclear extracts. This western blot shows reactivity with purified recombinant TAP tagged human ING5 protein (lane 3) and does not recognize TAP tagged ING4 on the same membrane (lane 2). A mock purification is shown in lane 1. Comparison to a molecular weight marker (not shown) indicates a single band of ~45.0 kDa corresponding to the expected molecular weight for the recombinant protein. The blot was incubated with a 1:500 dilution of the antibody at room temperature followed by detection using chemiluminescence reagent with a 5-min exposure time. Other detection systems will yield similar results. Personal communication Jacques Cote.



Western blot analysis is shown using Boster's Affinity Purified anti-p28 ING5 antibody to detect over expressed Human ING5 present in cell extracts. This western blot shows reactivity with purified recombinant human ING5 protein. Comparison to a molecular weight marker (not shown) indicates a single band of ~36 kDa corresponding to the expected molecular weight for the recombinant protein. Approximately 10 µg of lysate was separated on a 4-20% Tris-Glycine gel by SDS-PAGE and transferred onto nitrocellulose. After blocking the membrane was probed with the primary antibody diluted to 1:1,500. Incubation was overnight at 4° C followed by washes and reaction with a 1:20,000 dilution of IRDye™ 800 conjugated Rb-a-Goat IgG [H&L] MXHu (605-432-013) for 45 min at room temperature. IRDye™ 800 fluorescence image was captured using the Odyssey® Infrared Imaging System developed by LI-COR. IRDye is a trademark of LI-COR, Inc. Other detection systems will yield similar results.

Submit a product review to Biocompare.com

Submit a review of this product to Biocompare.com to receive a \$20 Amazon.com giftcard! Your reviews help your fellow scientists make the right decisions. Thank you for your contribution.



Anti-p28 ING5 Antibody

For Research Use Only. Not for use in diagnostic procedures.