

## Anti-GLU2B PRKCSH Antibody

Catalog Number: A04992

### Overview

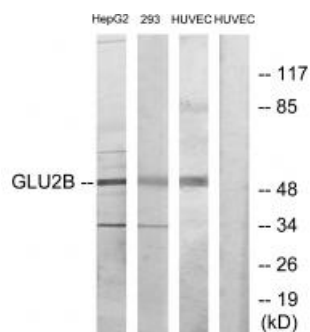
Product Name	Anti-GLU2B PRKCSH Antibody
Reactive Species	Human, Mouse
Description	Boster Bio Anti-GLU2B PRKCSH Antibody catalog # A04992. Tested in IF, WB applications. This antibody reacts with Human, Mouse.
Application	IF, WB
Clonality	Polyclonal
Formulation	Rabbit IgG in phosphate buffered saline (without Mg <sup>2+</sup> and Ca <sup>2+</sup> ), pH 7.4, 150mM NaCl, 0.02% sodium azide and 50% glycerol.
Storage Instructions	Store at -20°C for one year. For short term storage and frequent use, store at 4°C for up to one month. Avoid repeated freeze-thaw cycles.
Host	Rabbit
Uniprot ID	P14314

### Technical Details

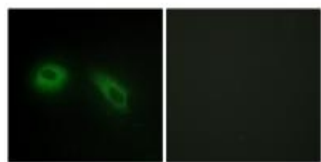
Immunogen	Synthesized peptide derived from internal of human GLU2B.
Form	Liquid
Concentration	0.5-1mg/ml, actual concentration vary by lot. Use suggested dilution ratio to decide dilution procedure.
Purification	Immunogen affinity purified
Suggested Dilutions	Dilute the sample so that the expected range of concentrations fall within the detection range of this kit. If the expected range of concentration is unknown, a pilot test should be conducted to decide the optimal dilution ratio for your samples. Some PubMed article(s) citing the expression level of this target are as follows: Boster Bio's internal QC testing used WB, 1:500-1:3000 Immunofluorescence, 1:100-1:500

For protocols please visit <https://www.bosterbio.com/protocol-and-troubleshooting/>

## Anti-GLU2B PRKCSH Antibody (A04992) Images



Western blot analysis of extracts from HepG2, 293 and HUVEC cells, using GLU2B antibody A04992.



Immunofluorescence analysis of HeLa cells, using GLU2B antibody A04992.

## Submit a product review to Biocompare.com

Submit a review of this product to Biocompare.com to receive a \$20 Amazon giftcard! Your reviews help your fellow scientists make the right decisions. Thank you for your contribution.



Anti-GLU2B PRKCSH Antibody