

Anti-CRMP1 Antibody

Catalog Number: A05002

About CRMP1

Collapsin-response mediator proteins (CRMPs) are highly expressed in the developing brain where they play major roles in axonal outgrowth, neurite differentiation, and apoptosis. Their continued expression in areas of high synaptic remodeling such as the cerebellum, hippocampus, and the olfactory system suggests that these proteins may also be involved in adult brain plasticity. CRMP-1 was initially identified as a dihydro-pyrimidinase expressed exclusively in brain; later studies have shown that it is involved with neurotrophin (NT) 3-induced neurite formation and outgrowth. CRMP-1 localization switches from axonal to somatodendritic when neurons reach functional maturity, suggesting that it is involved in early neuronal differentiation as well as in later processes related to the survival or death of the newly generated neurons.

Overview

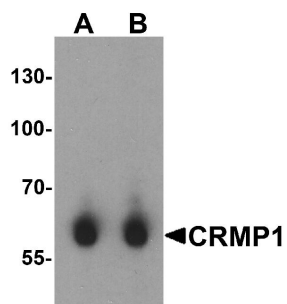
Product Name	Anti-CRMP1 Antibody
Reactive Species	Human, Mouse, Rat
Description	Boster Bio Anti-CRMP1 Antibody (Catalog # A05002). Tested in ELISA, WB, IHC-P, IF applications. This antibody reacts with Human, Mouse, Rat.
Application	ELISA, IF, IHC-P, WB
Clonality	Polyclonal
Formulation	CRMP1 Antibody is supplied in PBS containing 0.02% sodium azide.
Storage Instructions	CRMP1 antibody can be stored at 4°C for three months and -20°C, stable for up to one year. Avoid repeated freeze-thaw cycles. Antibodies should not be exposed to prolonged high temperatures.
Host	Rabbit
Uniprot ID	Q14194

Technical Details

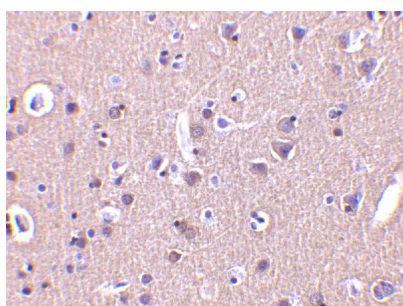
Immunogen	CRMP1 antibody was raised against a 15 amino acid synthetic peptide from near the carboxy terminus of human CRMP1. The immunogen is located within the last 50 amino acids of CRMP1.
Predicted Reactive Species	Mouse, Rat
Cross Reactivity	SKI2W antibody is human, mouse and rat reactive. At least two isoforms of SKI2W are known to exist; this antibody will detect both isoforms.
Isotype	IgG
Form	Liquid
Concentration	1 mg/mL

Purification	CRMP1 Antibody is affinity chromatography purified via peptide column.
Suggested Dilutions	<p>Dilute the sample so that the expected range of concentrations fall within the detection range of this kit.</p> <p>If the expected range of concentration is unknown, a pilot test should be conducted to decide the optimal dilution ratio for your samples.</p> <p>Some PubMed article(s) citing the expression level of this target are as follows:</p> <p>Boster Bio's internal QC testing used:</p> <p>CRMP1 antibody can be used for the detection of CRMP1 by Western blot at 0.5 - 2 ug/mL.</p> <p>Antibody can also be used for immunohistochemistry starting at 2 ug/mL. For immunofluorescence start at 10 ug/mL.</p> <p>Antibody validated: Western Blot in human samples; Immunohistochemistry in human samples and Immunofluorescence in human samples. All other applications and species not yet tested. Optimal dilutions for each application should be determined by the researcher.</p>

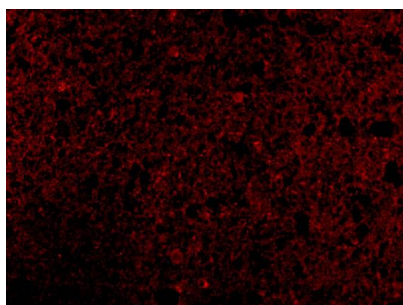
Anti-CRMP1 Antibody (A05002) Images



Western blot analysis of CRMP1 in human brain tissue lysate with CRMP1 antibody at (A) 1 and (B) 2 ug/mL.



Immunohistochemistry of CRMP in human brain tissue with CRMP antibody at 2 ug/mL.



Immunofluorescence of CRMP1 in Human Brain cells with CRMP1 antibody at 10 ug/mL.

Submit a product review to Biocompare.com

Submit a review of this product to Biocompare.com to receive a \$20 Amazon.com giftcard! Your reviews help your fellow scientists make the right decisions. Thank you for your contribution.



Anti-CRMP1 Antibody