

## Anti-Collagen alpha-1(XII) chain COL12A1 Antibody

Catalog Number: A05008

### Overview

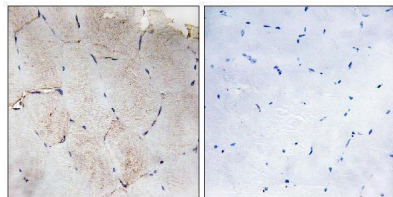
Product Name	Anti-Collagen alpha-1(XII) chain COL12A1 Antibody
Reactive Species	Human, Mouse, Rat
Description	Boster Bio Anti-Collagen alpha-1 (XII) chain COL12A1 Antibody catalog # A05008. Tested in ELISA, IF, IHC applications. This antibody reacts with Human.
Application	ELISA, IF, IHC
Clonality	Polyclonal
Formulation	Liquid in PBS containing 50% glycerol, 0.5% stabilizing protein and 0.02% sodium azide. *This antibody is supplied in a stabilized formulation. Compatibility with conjugation reactions depends on the chemistry of the conjugation method used. For conjugation methods that are not compatible with the stabilizing components present in this formulation, a carrier-free antibody format is required.
Storage Instructions	Store at -20°C for one year. For short term storage and frequent use, store at 4°C for up to one month. Avoid repeated freeze-thaw cycles.
Host	Rabbit
Uniprot ID	Q99715

### Technical Details

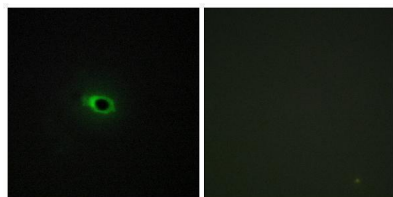
Immunogen	The antiserum was produced against synthesized peptide derived from human Collagen XII alpha1. AA range:1481-1530
Isotype	IgG
Form	Liquid
Concentration	1 mg/ml
Purification	The antibody was affinity-purified from rabbit antiserum by affinity-chromatography using epitope-specific immunogen.
Suggested Dilutions	IHC 1:100-1:300 IF 1:200-1:1000 ELISA 1:10000

## Anti-Collagen alpha-1(XII) chain COL12A1 Antibody (A05008) Images

---



Immunohistochemistry analysis of paraffin-embedded human skeletal muscle tissue, using Collagen XII alpha1 Antibody. The picture on the right is blocked with the synthesized peptide.



Immunofluorescence analysis of COS7 cells, using Collagen XII alpha1 Antibody. The picture on the right is blocked with the synthesized peptide.

### Submit a product review to [Biocompare.com](https://www.biocompare.com)

---

Submit a review of this product to [Biocompare.com](https://www.biocompare.com) to receive a \$20 Amazon.com giftcard! Your reviews help your fellow scientists make the right decisions. Thank you for your contribution.



Anti-Collagen alpha-1(XII) chain COL12A1 Antibody

For Research Use Only. Not for use in diagnostic procedures.