

Anti-Aldolase ALDOA Antibody

Catalog Number: A05022-2

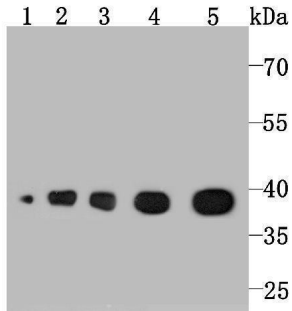
Overview

Product Name	Anti-Aldolase ALDOA Antibody
Reactive Species	Human, Mouse, Rat, Zebrafish
Description	Boster Bio Anti-Aldolase ALDOA Antibody catalog # A05022-2. Tested in WB,ICC,IF,IHC applications. This antibody reacts with Human,Mouse,Rat,Zebrafish.
Application	IF, IHC, ICC, WB
Clonality	Polyclonal
Formulation	Rabbit IgG, 1mg/ml in PBS with 0.02% sodium azide, 50% glycerol, pH7.2
Storage Instructions	Store at -20°C for one year. For short term storage and frequent use, store at 4°C for up to one month. Avoid repeated freeze-thaw cycles.
Host	Rabbit
Uniprot ID	P04075

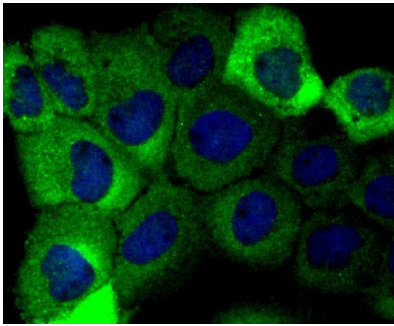
Technical Details

Immunogen	Recombinant protein
Isotype	IgG
Form	Liquid
Concentration	1 mg/ml
Purification	ProA affinity purified
Suggested Dilutions	WB: 1:500-1:2,000 ICC/IF :1:50-1:200 IHC: 1:50-1:200

Anti-Aldolase ALDOA Antibody (A05022-2) Images



Western blot analysis of Aldolase on different lysates using anti-Aldolase antibody at 1/1,000 dilution. Positive control: Lane 1: A549 Lane 2: HeLa Lane 3: Mouse liver Lane 4: Rat liver Lane 5: Rat spleen



ICC staining Aldolase in A431 cells (green). The nuclear counter stain is DAPI (blue). Cells were fixed in paraformaldehyde, permeabilised with 0.25% Triton X100/PBS.

Submit a product review to [Biocompare.com](https://www.biocompare.com)

Submit a review of this product to [Biocompare.com](https://www.biocompare.com) to receive a \$20 Amazon.com giftcard! Your reviews help your fellow scientists make the right decisions. Thank you for your contribution.



Anti-Aldolase ALDOA Antibody

For Research Use Only. Not for use in diagnostic procedures.