

## Anti-Melanoma-associated antigen D1 Maged1 Antibody

Catalog Number: A05037

### Overview

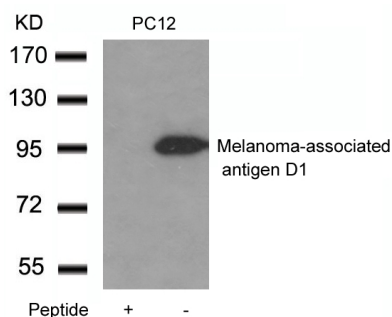
Product Name	Anti-Melanoma-associated antigen D1 Maged1 Antibody
Reactive Species	Human, Mouse, Rat
Description	Boster Bio Anti-Melanoma-associated antigen D1 Maged1 Antibody catalog # A05037. Tested in WB applications. This antibody reacts with Human, Mouse, Rat.
Application	WB
Clonality	Polyclonal
Formulation	Supplied at 1.0mg/mL in phosphate buffered saline (without Mg <sup>2+</sup> and Ca <sup>2+</sup> ), pH 7.4, 150mM NaCl, 0.02% sodium azide and 50% glycerol.
Storage Instructions	Store at -20°C for one year. For short term storage and frequent use, store at 4°C for up to one month. Avoid repeated freeze-thaw cycles.
Host	Rabbit
Uniprot ID	Q9QYH6

### Technical Details

Immunogen	Peptide with sequence C-EAEARAEARNRMGIGDE derived from Mouse Melanoma-associated antigen D1.
Form	Liquid
Concentration	0.5-1mg/ml, actual concentration vary by lot. Use suggested dilution ratio to decide dilution procedure.
Purification	Immunogen affinity purified
Suggested Dilutions	Dilute the sample so that the expected range of concentrations fall within the detection range of this kit. If the expected range of concentration is unknown, a pilot test should be conducted to decide the optimal dilution ratio for your samples. Some PubMed article(s) citing the expression level of this target are as follows: Boster Bio's internal QC testing used WB, 1:500-1:1000

For protocols please visit <https://www.bosterbio.com/protocol-and-troubleshooting/>

## Anti-Melanoma-associated antigen D1 Maged1 Antibody (A05037) Images



Western blot analysis of extracts from PC12 cells using Melanoma-associated antigen D1 antibody A05037 and the same antibody preincubated with blocking peptide.

### Submit a product review to Biocompare.com

Submit a review of this product to Biocompare.com to receive a \$20 Amazon giftcard! Your reviews help your fellow scientists make the right decisions. Thank you for your contribution.



Anti-Melanoma-associated antigen D1 Maged1 Antibody