

Anti-RP105 CD180 Antibody

Catalog Number: A05085-1

About CD180

Toll-like receptors (TLRs) are evolutionarily conserved pattern-recognition molecules resembling the toll proteins that mediate antimicrobial responses in *Drosophila*. These proteins recognize different microbial products during infection and serve as an important link between the innate and adaptive immune responses. The signaling of these TLRs is kept under tight control by the expression of endogenous inhibiting proteins. One such protein is RP105, a recently identified homolog to TLR4 that, with MD-1, interacts with and inhibits the TLR4/MD-2 signaling pathway. It has also been suggested that the RP105/MD-1 complex influences antibody production mediated by both TLR4/MD-2 and TLR2 receptor complexes.

Overview

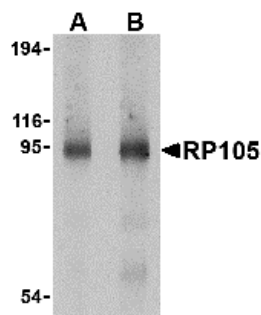
Product Name	Anti-RP105 CD180 Antibody
Reactive Species	Human, Mouse
Description	Boster Bio Anti-RP105 CD180 Antibody (Catalog # A05085-1). Tested in ELISA, WB, IHC-P applications. This antibody reacts with Human, Mouse.
Application	ELISA, IHC-P, WB
Clonality	Polyclonal
Formulation	RP105 Antibody is supplied in PBS containing 0.02% sodium azide.
Storage Instructions	RP105 antibody can be stored at 4°C for three months and -20°C, stable for up to one year. Avoid repeated freeze-thaw cycles. Antibodies should not be exposed to prolonged high temperatures.
Host	Rabbit
Uniprot ID	Q99467

Technical Details

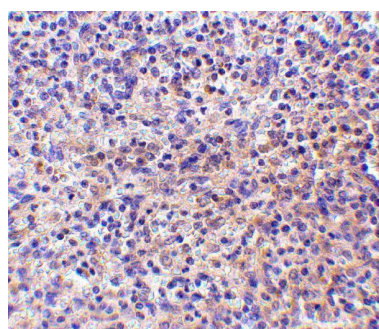
Immunogen	RP105 antibody was raised against a 14 amino acid synthetic peptide from near the carboxy terminus of human RP105. The immunogen is located within amino acids 590 - 640 of RP105.
Predicted Reactive Species	Mouse
Isotype	IgG
Form	Liquid
Concentration	1 mg/mL
Purification	RP105 Antibody is affinity chromatography purified via peptide column.
Suggested Dilutions	RP105 antibody can be used for the detection of RP105 by Western blot at 0.5 - 1 ug/mL. Despite its predicted molecular weight, RP105 often migrates at 95 - 105 kDa. Antibody can also be used for

immunohistochemistry starting at 10 ug/mL.
Antibody validated: Western Blot in human samples and Immunohistochemistry in human samples.
All other applications and species not yet tested. Optimal dilutions for each application should be determined by the researcher.

Anti-RP105 CD180 Antibody (A05085-1) Images



Western blot analysis of RP105 in human spleen tissue lysate with RP105 antibody at (A) 0.5 and (B) 1 ug/mL.



Immunohistochemistry of RP105 in human spleen tissue with RP105 antibody at 10 ug/mL.

Submit a product review to [Biocompare.com](https://www.biocompare.com)

Submit a review of this product to [Biocompare.com](https://www.biocompare.com) to receive a \$20 Amazon.com giftcard! Your reviews help your fellow scientists make the right decisions. Thank you for your contribution.



Anti-RP105 CD180 Antibody

For Research Use Only. Not for use in diagnostic procedures.