

Anti-SEN6 (K1077) Antibody

Catalog Number: A05088

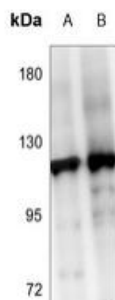
Overview

Product Name	Anti-SEN6 (K1077) Antibody
Reactive Species	Human, Rat
Description	Boster Bio Anti-SEN6 (K1077) Antibody catalog # A05088. Tested in WB,IHC applications. This antibody reacts with Human,Rat.
Application	IHC, WB
Clonality	Polyclonal
Formulation	Rabbit IgG, 1mg/ml in PBS with 0.02% sodium azide, 50% glycerol, pH7.2
Storage Instructions	Store at -20°C for one year. For short term storage and frequent use, store at 4°C for up to one month. Avoid repeated freeze-thaw cycles.
Host	Rabbit
Uniprot ID	Q9GZR1

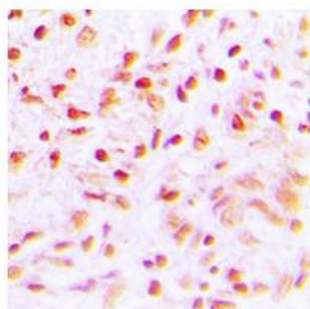
Technical Details

Immunogen	Synthetic peptide, corresponding to amino acids 1040-1089 of Human SEN6.
Isotype	IgG
Form	Liquid
Concentration	1 mg/ml
Purification	The antibody was affinity-purified from rabbit antiserum by affinity-chromatography using epitope-specific immunogen and the purity is > 95% (by SDS-PAGE).
Suggested Dilutions	WB: 1:500-1:1000 IHC: 1:50-1:200

Anti-SEN6 (K1077) Antibody (A05088) Images



Western blot analysis of SENP6 expression in A2780 (A), HEK293T (B) whole cell lysates.



Immunohistochemistry (IHC) analyzes of SENP6 (K1077) pAb in paraffin-embedded human lung carcinoma tissue.

Submit a product review to [Biocompare.com](https://www.biocompare.com)

Submit a review of this product to [Biocompare.com](https://www.biocompare.com) to receive a \$20 Amazon.com giftcard! Your reviews help your fellow scientists make the right decisions. Thank you for your contribution.



Anti-SEN6 (K1077) Antibody

For Research Use Only. Not for use in diagnostic procedures.