

Anti-Leucyl-cystinyl aminopeptidase LNPEP Antibody

Catalog Number: A05092

About LNPEP

LNPEP, also known as insulin-responsive aminopeptidase (IRAP), was initially identified as an abundant protein that is associated with specialized endosomes termed GLUT4 storage vesicles (GSVs) in adipocytes. The luminal domain of LNPEP contains an aminopeptidase activity that is involved in peptide hormone processing and antigenic peptide processing. LNPEP is also a key regulator of GLUT4 trafficking by controlling the sorting of GLUT4 from endosomes to the GSVs.

Overview

Product Name	Anti-Leucyl-cystinyl aminopeptidase LNPEP Antibody
Reactive Species	Human
Description	Boster Bio Anti-Leucyl-cystinyl aminopeptidase LNPEP Antibody (Catalog # A05092). Tested in ELISA, WB, IF applications. This antibody reacts with Human.
Application	ELISA, IF, WB
Clonality	Polyclonal
Formulation	LNPEP Antibody is supplied in PBS containing 0.02% sodium azide.
Storage Instructions	LNPEP antibody can be stored at 4°C for three months and -20°C, stable for up to one year. Avoid repeated freeze-thaw cycles. Antibodies should not be exposed to prolonged high temperatures.
Host	Rabbit
Uniprot ID	Q9UIQ6

Technical Details

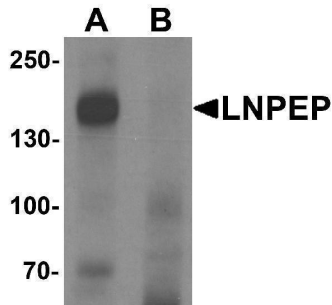
Immunogen	LNPEP antibody was raised against a 15 amino acid synthetic peptide near the carboxy terminus of human LNPEP. The immunogen is located within amino acids 900 - 950 of LNPEP.
Predicted Reactive Species	Mouse, Rat
Cross Reactivity	At least three isoforms are known to exist; this antibody will detect all three isoforms. Despite its predicted molecular weight, LNPEP often migrates at 165kD in SDS-PAGE.
Isotype	IgG
Form	Liquid
Concentration	1 mg/mL
Purification	LNPEP Antibody is affinity chromatography purified via peptide column.

Suggested Dilutions

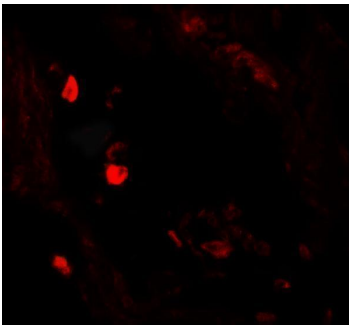
LNPEP antibody can be used for detection of LNPEP by Western blot at 1 ug/mL. For immunofluorescence start at 20 ug/mL.

Antibody validated: Western Blot in human samples and Immunofluorescence in human samples. All other applications and species not yet tested. Optimal dilutions for each application should be determined by the researcher.

Anti-Leucyl-cystinyl aminopeptidase LNPEP Antibody (A05092) Images



Western blot analysis of LNPEP in human lung tissue lysate with LNPEP antibody at 1 ug/mL in (A) the absence and (B) the presence of blocking peptide.



Immunofluorescence of LNPEP in human lung tissue with LNPEP antibody at 20 ug/mL.

Submit a product review to [Biocompare.com](https://www.biocompare.com)

Submit a review of this product to [Biocompare.com](https://www.biocompare.com) to receive a \$20 Amazon.com giftcard! Your reviews help your fellow scientists make the right decisions. Thank you for your contribution.



Anti-Leucyl-cystinyl aminopeptidase LNPEP Antibody

For Research Use Only. Not for use in diagnostic procedures.