

Anti-Artemin ARTN Antibody

Catalog Number: A05102

Introduction

The clone FUT4815 recognizes CD15, a cell surface protein (~220kDa) abundantly expressed by granulocytes and monocytes. CD15 plays important role in mediating phagocytosis, bactericidal activity, and also chemotaxis. CD15 is also expressed by Reed-Sternberg cells and some other epithelial cells. CD15 antibody is very useful in the identification of Hodgkin's disease and also large cell lymphomas of both B and T phenotypes.

This antibody is routinely tested by flow cytometric analysis. Flow cytometry and other applications were tested during antibody development or are reported in the literature.

Application Information

Each lot of this antibody has been pre-titrated and tested by flow cytometric analysis of human PBMCs such that 5µl of this product is sufficient for staining of 1 million cells in a 100µl staining volume or 100µl of whole blood. It is recommended that antibody reactivity be empirically titrated for optimal performance in the application of interest.

Overview

Product Name	Anti-Artemin ARTN Antibody
Reactive Species	Human
Description	Boster Bio Anti-Artemin ARTN Antibody (Catalog# A05102). Tested in WB applications. This antibody reacts with Human.
Conjugate	FITC
Application	WB
Clonality	Polyclonal Clone: TS1/22
Formulation	PBS pH 7.2, 0.2% (w/v) BSA, 0.09% (w/v) sodium azide
Storage Instructions	Store at 4°C for short term. Aliquot and store at -20°C for long term. Avoid repeated freeze-thaw cycles.
Host	Rabbit
Uniprot ID	Q5T4W7

Technical Details

Immunogen	GPSRARAAGARGC
Predicted Reactive Species	Bovine, Canine

Isotype	Rabbit IgG
Form	Liquid
Concentration	0.5-1mg/ml, actual concentration vary by lot. Use suggested dilution ratio to decide dilution procedure.
Purification	Affinity Purified
Suggested Dilutions	<p>Dilute the sample so that the expected range of concentrations fall within the detection range of this kit.</p> <p>If the expected range of concentration is unknown, a pilot test should be conducted to decide the optimal dilution ratio for your samples.</p> <p>Some PubMed article(s) citing the expression level of this target are as follows:</p> <p>Boster Bio's internal QC testing used:</p> <p>WB 1:500</p>

Anti-Artemin ARTN Antibody (A05102) Images

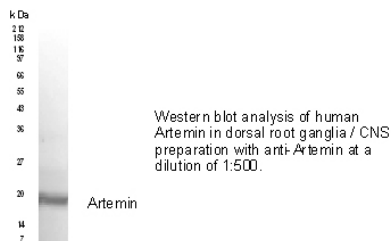


Figure 1. Validation data of ARTN using Anti-Artemin ARTN Antibody (A05102).

Submit a product review to Biocompare.com

Submit a review of this product to Biocompare.com to receive a \$20 Amazon.com giftcard! Your reviews help your fellow scientists make the right decisions. Thank you for your contribution.



Anti-Artemin ARTN Antibody