

## Anti-Adducin beta ADD2 Antibody

Catalog Number: A05106

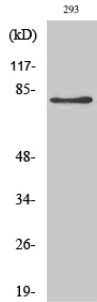
### Overview

Product Name	Anti-Adducin beta ADD2 Antibody
Reactive Species	Human, Mouse, Rat
Description	Boster Bio Anti-Adducin beta ADD2 Antibody catalog # A05106. Tested in WB applications. This antibody reacts with Human, Mouse, Rat.
Application	WB
Clonality	
Formulation	Liquid in PBS containing 50% glycerol, 0.5% BSA and 0.02% sodium azide.
Storage Instructions	Store at -20°C for one year. For short term storage and frequent use, store at 4°C for up to one month. Avoid repeated freeze-thaw cycles.
Host	Rabbit
Uniprot ID	P35612

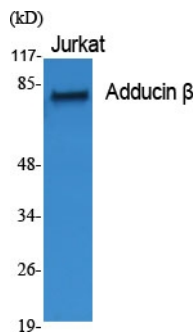
### Technical Details

Isotype	IgG
Form	Liquid
Purification	Immunogen affinity purified
Suggested Dilutions	<p>Dilute the sample so that the expected range of concentrations fall within the detection range of this kit.</p> <p>If the expected range of concentration is unknown, a pilot test should be conducted to decide the optimal dilution ratio for your samples.</p> <p>Some PubMed article(s) citing the expression level of this target are as follows: Boster Bio's internal QC testing used WB, 1:500-1:2000</p> <p>For protocols, please visit <a href="https://www.bosterbio.com/protocol-and-troubleshooting/">https://www.bosterbio.com/protocol-and-troubleshooting/</a></p>

## Anti-Adducin beta ADD2 Antibody (A05106) Images



Western Blot (WB) analysis of 293 cells using Adducin beta Polyclonal antibody.



Western Blot (WB) analysis of specific cells using Adducin beta Polyclonal antibody.

### Submit a product review to Biocompare.com

Submit a review of this product to Biocompare.com to receive a \$20 Amazon.com giftcard! Your reviews help your fellow scientists make the right decisions. Thank you for your contribution.



Anti-Adducin beta ADD2 Antibody