

## Anti-Adducin Beta (E497) ADD2 Antibody

Catalog Number: A05106-1

### About ADD2

Catalyzes the isomerization of prostaglandin H2 to prostacyclin (= prostaglandin I2).

Miyata A., Biochem. Biophys. Res. Commun. 200:1728-1734(1994).

Chevalier D., Hum. Genet. 108:148-155(2001).

Deloukas P., Nature 414:865-871(2001).

### Overview

|                      |  |
|----------------------|--|
| Product Name         | Anti-Adducin Beta (E497) ADD2 Antibody   |
| Reactive Species     | Human, Mouse, Rat  |
| Description          | Boster Bio Anti-Adducin Beta (E497) ADD2 Antibody catalog # A05106-1. Tested in WB,IHC,IF applications. This antibody reacts with Human,Mouse,Rat. |
| Application          | IF, IHC, WB  |
| Clonality            | Polyclonal   |
| Formulation          | Rabbit IgG, 1mg/ml in PBS with 0.02% sodium azide, 50% glycerol, pH7.2   |
| Storage Instructions | Store at -20°C for one year. For short term storage and frequent use, store at 4°C for up to one month. Avoid repeated freeze-thaw cycles.         |
| Host                 | Rabbit   |
| Uniprot ID           | P35612   |

### Technical Details

|                            |   |
|----------------------------|---|
| Immunogen                  | Synthesized peptide derived from human IRPL1 protein.   |
| Predicted Reactive Species | Boar, Bovine, Canine, Golden Hamster  |
| Isotype                    | IgG   |
| Form                       | Liquid  |
| Concentration              | 1 mg/ml   |
| Purification               | The antibody was affinity-purified from rabbit antiserum by affinity-chromatography using epitope-specific immunogen and the purity is > 95% (by SDS-PAGE). |
| Suggested Dilutions        | Dilute the sample so that the expected range of concentrations fall within the detection range of this kit.   |

If the expected range of concentration is unknown, a pilot test should be conducted to decide the optimal dilution ratio for your samples.  
Some PubMed article(s) citing the expression level of this target are as follows:  
Boster Bio's internal QC testing used:  
WB: 1:500-1:1000  
IHC: 1:50-1:200  
IF: 1:50-1:200

## Anti-Adducin Beta (E497) ADD2 Antibody (A05106-1) Images

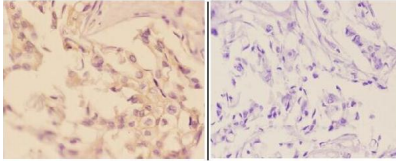
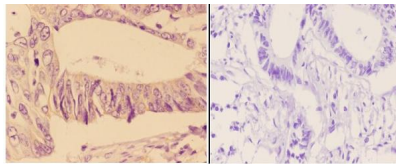


Figure 2. Immunohistochemistry validation of ADD2 using Anti-Adducin Beta (E497) ADD2 Antibody (A05106-1).

Immunohistochemistry (IHC) analyzes of Adducin beta (E497) pAb in paraffin-embedded human breast carcinoma tissue at 1:50



BS2523  
Lot CA36131

Figure 3. Immunohistochemistry validation of ADD2 using Anti-Adducin Beta (E497) ADD2 Antibody (A05106-1).

Immunohistochemistry (IHC) analyzes of Adducin beta (E497) pAb in paraffin-embedded human rectum carcinoma tissue at 1:50

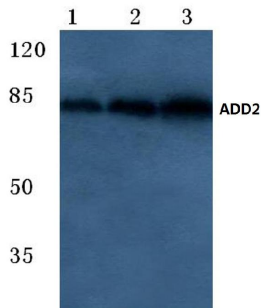


Figure 1. Western blotting validation for Anti-Adducin Beta (E497) ADD2 Antibody A05106-1

Western blot (WB) analysis of Adducin beta (E497) pAb at 1:500 dilution

Lane1:C6 whole cell lysate(40ug)

Lane2:The Brain tissue lysate of Mouse(40ug)

Lane3:U-87MG whole cell lysate(40ug)

Lane4:K562 whole cell lysate(40ug)

Electrophoresis was performed on a SDS-PAGE gel. To determine SDS-PAGE gel concentration

## Submit a product review to Biocompare.com

Submit a review of this product to Biocompare.com to receive a \$20 Amazon.com giftcard! Your reviews help your fellow scientists make the right decisions. Thank you for your contribution.



Anti-Adducin Beta (E497) ADD2 Antibody