

## Anti-GAT1/SLC6A1 Antibody Picoband®

Catalog Number: A05109-2

### About SLC6A1

GABA transporter 1 (GAT1), also known as sodium- and chloride-dependent GABA transporter 1, is a protein that in humans is encoded by the SLC6A1 gene. GABA Transporter 1 uses Na<sup>+</sup> and Cl<sup>-</sup> to create a gradient, which removes or adds GABA to extracellular spaces in the cerebrum and cerebellum. The stoichiometry for GABA Transporter 1 is 2 Na<sup>+</sup>: 1 Cl<sup>-</sup>: 1 GABA. The activity of GAT1 is largely dependent on the presence of Na<sup>+</sup>, while Cl<sup>-</sup> assists by increasing the ability for GAT-1 to uptake GABA.

### Overview

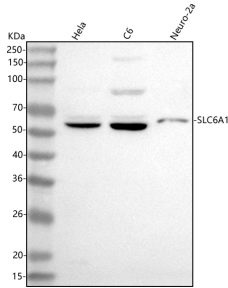
Product Name	Anti-GAT1/SLC6A1 Antibody Picoband®
Reactive Species	Human, Mouse, Rat
Description	Boster Bio Anti-GAT1/SLC6A1 Antibody Picoband® catalog # A05109-2. Tested in ELISA, WB applications. This antibody reacts with Human, Mouse, Rat. The brand Picoband indicates this is a premium antibody that guarantees superior quality, high affinity, and strong signals with minimal background in Western blot applications. Only our best-performing antibodies are designated as Picoband, ensuring unmatched performance.
Application	ELISA, WB
Clonality	Polyclonal
Formulation	Each vial contains 4 mg Trehalose, 0.9 mg NaCl, 0.2 mg Na <sub>2</sub> HPO <sub>4</sub> .
Storage Instructions	At -20°C for one year from date of receipt. After reconstitution, at 4°C for one month. It can also be aliquotted and stored frozen at -20°C for six months. Avoid repeated freezing and thawing.
Host	Rabbit
Uniprot ID	P30531

### Technical Details

Immunogen	E.coli-derived human GAT1/SLC6A1 recombinant protein (Position: A23-A215). Human SLC6A1 shares 98.4% amino acid (aa) sequence identity with both mouse and rat SLC6A1.
Recommended Detection Systems	Boster recommends Enhanced Chemiluminescent Kit with anti-Rabbit IgG (EK1002) for Western blot.
Cross Reactivity	No cross reactivity with other proteins.
Isotype	IgG
Form	Lyophilized
Concentration	Adding 0.2 ml of distilled water will yield a concentration of 500 µg/ml.

Purification	Immunogen affinity purified.
Suggested Dilutions	Western blot, 0.25-0.5 ug/ml, Human, Mouse, Rat ELISA, 0.1-0.5 ug/ml, -

## Anti-GAT1/SLC6A1 Antibody Picoband® (A05109-2) Images



Western blot analysis of GAT1/SLC6A1 using anti-GAT1/SLC6A1 antibody (A05109-2). Electrophoresis was performed on a 5-20% SDS-PAGE gel at 70V (Stacking gel) / 90V (Resolving gel) for 2-3 hours. The sample well of each lane was loaded with 30 ug of sample under reducing conditions. Lane 1: human HeLa whole cell lysates, Lane 2: rat C6 whole cell lysates, Lane 3: mouse Neuro-2a whole cell lysates. After electrophoresis, proteins were transferred to a nitrocellulose membrane at 150 mA for 50-90 minutes. Blocked the membrane with 5% non-fat milk/TBS for 1.5 hour at RT. The membrane was incubated with rabbit anti-GAT1/SLC6A1 antigen affinity purified polyclonal antibody (Catalog # A05109-2) at 0.5 ug/mL overnight at 4°C, then washed with TBS-0.1%Tween 3 times with 5 minutes each and probed with a goat anti-rabbit IgG-HRP secondary antibody at a dilution of 1:5000 for 1.5 hour at RT. The signal is developed using an Enhanced Chemiluminescent detection (ECL) kit (Catalog # EK1002) with Tanon 5200 system. A specific band was detected for GAT1/SLC6A1 at approximately 67 kDa. The expected band size for GAT1/SLC6A1 is at 67 kDa.

### Submit a product review to [Biocompare.com](https://www.biocompare.com)

Submit a review of this product to [Biocompare.com](https://www.biocompare.com) to receive a \$20 Amazon.com giftcard! Your reviews help your fellow scientists make the right decisions. Thank you for your contribution.



Anti-GAT1/SLC6A1 Antibody

For Research Use Only. Not for use in diagnostic procedures.