

Anti-CSDE1/NRU Antibody Picoband®

Catalog Number: A05114-1

About CSDE1

Cold shock domain-containing protein E1 is a protein that in humans is encoded by the CSDE1 gene. Originally described as the product of an active transcription unit located upstream of the N-RAS gene, CSDE1 (cold shock domain-containing protein E1) is a highly conserved RNA-binding protein containing five cold-shock domains. CSDE1 is mostly localized in the cytoplasm where it interacts with distinct protein complexes involved in the post-transcriptional regulation of numerous mRNAs in a dynamic and complex manner. CSDE1 plays a role in maintaining the undifferentiated state of human embryonic stem cells (hESCs), and its loss results in accelerated neural differentiation and neurogenesis, partially via post-transcriptional regulation of fatty acid binding protein 7 (FABP7) and vimentin (VIM) mRNAs. In human melanoma, increased CSDE1 protein expression has been shown to modulate the levels of pro-oncogenic factors such as vimentin or RAC1 and tumor suppressors such as PTEN, thus promoting tumor invasion and metastasis.

Overview

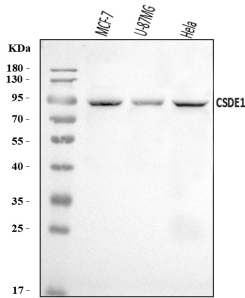
Product Name	Anti-CSDE1/NRU Antibody Picoband®
Reactive Species	Human
Description	Boster Bio Anti-CSDE1/NRU Antibody Picoband® catalog # A05114-1. Tested in ELISA, Flow Cytometry, WB applications. This antibody reacts with Human. The brand Picoband indicates this is a premium antibody that guarantees superior quality, high affinity, and strong signals with minimal background in Western blot applications. Only our best-performing antibodies are designated as Picoband, ensuring unmatched performance.
Application	ELISA, Flow Cytometry, WB
Clonality	Polyclonal
Formulation	Each vial contains 4 mg Trehalose, 0.9 mg NaCl, 0.2 mg Na ₂ HPO ₄ .
Storage Instructions	At -20°C for one year from date of receipt. After reconstitution, at 4°C for one month. It can also be aliquotted and stored frozen at -20°C for six months. Avoid repeated freezing and thawing.
Host	Rabbit
Uniprot ID	O75534

Technical Details

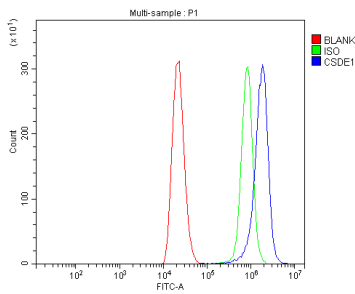
Immunogen	E.coli-derived human CSDE1/NRU recombinant protein (Position: M1-Q775).
Recommended Detection Systems	Boster recommends Enhanced Chemiluminescent Kit with anti-Rabbit IgG (EK1002) for Western blot.
Cross Reactivity	No cross-reactivity with other proteins.
Isotype	Rabbit IgG

Form	Lyophilized
Concentration	Adding 0.2 ml of distilled water will yield a concentration of 500 ug/ml.
Purification	Immunogen affinity purified.
Suggested Dilutions	Western blot, 0.25-0.5 ug/ml, Human Flow Cytometry (Fixed), 1-3 ug/1x10 ⁶ cells, Human ELISA, 0.1-0.5 ug/ml, -

Anti-CSDE1/NRU Antibody Picoband® (A05114-1) Images



Western blot analysis of CSDE1/NRU using anti-CSDE1/NRU antibody (A05114-1). Electrophoresis was performed on a 5-20% SDS-PAGE gel at 70V (Stacking gel) / 90V (Resolving gel) for 2-3 hours. The sample well of each lane was loaded with 30 ug of sample under reducing conditions. Lane 1: human MCF-7 whole cell lysates, Lane 2: human U-87MG whole cell lysates, Lane 3: human HeLa whole cell lysates. After electrophoresis, proteins were transferred to a nitrocellulose membrane at 150 mA for 50-90 minutes. Blocked the membrane with 5% non-fat milk/TBS for 1.5 hour at RT. The membrane was incubated with rabbit anti-CSDE1/NRU antigen affinity purified polyclonal antibody (Catalog # A05114-1) at 0.5 ug/mL overnight at 4°C, then washed with TBS-0.1%Tween 3 times with 5 minutes each and probed with a goat anti-rabbit IgG-HRP secondary antibody at a dilution of 1:5000 for 1.5 hour at RT. The signal is developed using an Enhanced Chemiluminescent detection (ECL) kit (Catalog # EK1002) with Tanon 5200 system. A specific band was detected for CSDE1/NRU at approximately 89 kDa. The expected band size for CSDE1/NRU is at 89 kDa.



Flow Cytometry analysis of THP-1 cells using anti-CSDE1/NRU antibody (A05114-1). Overlay histogram showing THP-1 cells stained with A05114-1 (Blue line). To facilitate intracellular staining, cells were fixed with 4% paraformaldehyde and permeabilized with permeabilization buffer. The cells were blocked with 10% normal goat serum. And then incubated with rabbit anti-CSDE1/NRU Antibody (A05114-1, 1 ug/1x10⁶ cells) for 30 min at 20°C. DyLight®488 conjugated goat anti-rabbit IgG (BA1127, 5-10 ug/1x10⁶ cells) was used as secondary antibody for 30 minutes at 20°C. Isotype control antibody (Green line) was rabbit IgG (1 ug/1x10⁶) used under the same conditions. Unlabelled sample without incubation with primary antibody and secondary antibody (Red line) was used as a blank control.

Submit a product review to Biocompare.com

Submit a review of this product to Biocompare.com to receive a \$20 Amazon.com giftcard! Your reviews help your fellow scientists make the right decisions. Thank you for your contribution.



Anti-CSDE1/NRU Antibody

For Research Use Only. Not for use in diagnostic procedures.