

## Anti-ERH Antibody

Catalog Number: A05129

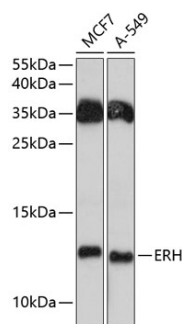
### Overview

|                      |  |
|----------------------|--|
| Product Name         | Anti-ERH Antibody  |
| Reactive Species     | Human  |
| Description          | Anti-ERH Antibody validated for WB. Reactive to Human. Tested in WB applications. This antibody reacts with Human.                         |
| Application          | WB   |
| Clonality            | Polyclonal   |
| Formulation          | Rabbit IgG, 1mg/ml in PBS with 0.02% sodium azide, 50% glycerol, pH7.2   |
| Storage Instructions | Store at -20°C for one year. For short term storage and frequent use, store at 4°C for up to one month. Avoid repeated freeze-thaw cycles. |
| Host                 | Rabbit   |
| Uniprot ID           | P84090   |

### Technical Details

|                     |   |
|---------------------|---|
| Immunogen           | Recombinant fusion protein of human ERH(NP_004441.1).   |
| Isotype             | IgG   |
| Form                | Liquid  |
| Concentration       | 1 mg/ml   |
| Purification        | The antibody was affinity-purified from rabbit antiserum by affinity-chromatography using epitope-specific immunogen and the purity is > 95% (by SDS-PAGE). |
| Suggested Dilutions | WB: 1:500-1:2000  |

## Anti-ERH Antibody (A05129) Images



Western blot analysis of extracts of various cell lines, using ERH antibody at 1:3000 dilution. Secondary antibody: HRP Goat Anti-Rabbit IgG at 1:10000 dilution. Lysates/proteins: 25ug per lane. Blocking buffer: 3% nonfat dry milk in TBST. Detection: ECL Basic Kit .Exposure time: 90s.

## Submit a product review to Biocompare.com

Submit a review of this product to Biocompare.com to receive a \$20 Amazon.com giftcard! Your reviews help your fellow scientists make the right decisions. Thank you for your contribution.



### Anti-ERH Antibody

For Research Use Only. Not for use in diagnostic procedures.