

Anti-SIRP-alpha Antibody

Catalog Number: A05151-1

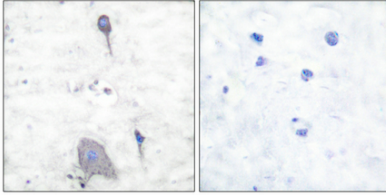
Overview

Product Name	Anti-SIRP-alpha Antibody
Reactive Species	Human, Mouse, Rat
Description	Boster Bio Anti-SIRP-alpha Antibody catalog # A05151-1. Tested in ELISA, IHC, WB applications. This antibody reacts with Human, Mouse, Rat.
Application	ELISA, IHC, WB
Clonality	Polyclonal
Formulation	Liquid in PBS containing 50% glycerol, 0.5% BSA and 0.02% sodium azide.
Storage Instructions	Store at -20°C for one year. For short term storage and frequent use, store at 4°C for up to one month. Avoid repeated freeze-thaw cycles.
Host	Rabbit
Uniprot ID	P78324

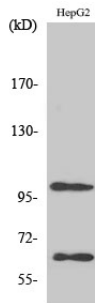
Technical Details

Immunogen	Synthesized peptide derived from human SIRP-alpha1
Isotype	IgG
Form	Liquid
Concentration	1 mg/ml
Purification	The antibody was affinity-purified from rabbit antiserum by affinity-chromatography using epitope-specific immunogen.
Suggested Dilutions	Dilute the sample so that the expected range of concentrations fall within the detection range of this kit. If the expected range of concentration is unknown, a pilot test should be conducted to decide the optimal dilution ratio for your samples. Some PubMed article(s) citing the expression level of this target are as follows: Boster Bio's internal QC testing used: WB 1:500-1:2000 IHC 1:100-1:300 ELISA 1:20000

Anti-SIRP-alpha Antibody (A05151-1) Images



Immunohistochemistry analysis of paraffin-embedded human brain tissue, using Sirp alpha1 Antibody. The picture on the right is blocked with the synthesized peptide.



Western blot analysis of various cells using SIRP-Alpha 1 Polyclonal Antibody

Submit a product review to Biocompare.com

Submit a review of this product to Biocompare.com to receive a \$20 Amazon.com giftcard! Your reviews help your fellow scientists make the right decisions. Thank you for your contribution.



Anti-SIRP-alpha Antibody