

Anti-TCF-3 TCF7L1 Antibody

Catalog Number: A05152

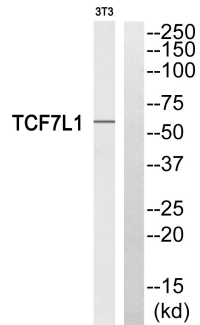
Overview

Product Name	Anti-TCF-3 TCF7L1 Antibody
Reactive Species	Human, Mouse
Description	Boster Bio Anti-TCF-3 TCF7L1 Antibody catalog # A05152. Tested in ELISA, WB applications. This antibody reacts with Human, Mouse.
Application	ELISA, WB
Clonality	Polyclonal
Formulation	Liquid in PBS containing 50% glycerol, 0.5% stabilizing protein and 0.02% sodium azide. *This antibody is supplied in a stabilized formulation. Compatibility with conjugation reactions depends on the chemistry of the conjugation method used. For conjugation methods that are not compatible with the stabilizing components present in this formulation, a carrier-free antibody format is required.
Storage Instructions	Store at -20°C for one year. For short term storage and frequent use, store at 4°C for up to one month. Avoid repeated freeze-thaw cycles.
Host	Rabbit
Uniprot ID	Q9HCS4

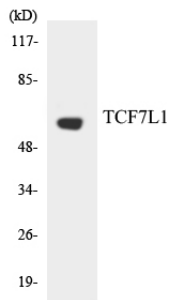
Technical Details

Immunogen	The antiserum was produced against synthesized peptide derived from human TCF7L1. AA range:321-370
Isotype	IgG
Form	Liquid
Concentration	1 mg/ml
Purification	The antibody was affinity-purified from rabbit antiserum by affinity-chromatography using epitope-specific immunogen.
Suggested Dilutions	WB 1:500-1:2000 ELISA 1:10000

Anti-TCF-3 TCF7L1 Antibody (A05152) Images



Western blot analysis of TCF7L1 Antibody. The lane on the right is blocked with the TCF7L1 peptide.



Western blot analysis of the lysates from HUVEC cells using TCF7L1 antibody.

Submit a product review to Biocompare.com

Submit a review of this product to Biocompare.com to receive a \$20 Amazon.com giftcard! Your reviews help your fellow scientists make the right decisions. Thank you for your contribution.



Anti-TCF-3 TCF7L1 Antibody

For Research Use Only. Not for use in diagnostic procedures.