

Anti-Alpha SNAP/NAPA Antibody Picoband®

Catalog Number: A05153-1

About NAPA

N-ethylmaleimide-sensitive factor Attachment Protein Alpha, also known as SNAP-alpha, is a SNAP protein that is involved in the intra-cellular trafficking and fusing of vesicles to target membranes in cells. This gene encodes a member of the soluble NSF attachment protein (SNAP) family. SNAP proteins play a critical role in the docking and fusion of vesicles to target membranes as part of the 20S NSF-SNAP-SNARE complex. The encoded protein plays a role in the completion of membrane fusion by mediating the interaction of N-ethylmaleimide-sensitive factor (NSF) with the vesicle-associated and membrane-associated SNAP receptor (SNARE) complex, and stimulating the ATPase activity of NSF. Alternatively spliced transcript variants have been observed for this gene.

Overview

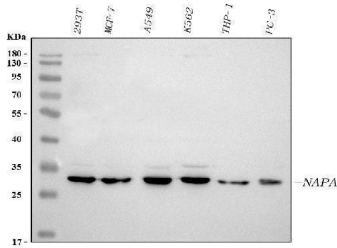
Product Name	Anti-Alpha SNAP/NAPA Antibody Picoband®
Reactive Species	Human
Description	Boster Bio Anti-Alpha SNAP/NAPA Antibody Picoband® catalog # A05153-1. Tested in WB, Flow Cytometry applications. This antibody reacts with Human. The brand Picoband indicates this is a premium antibody that guarantees superior quality, high affinity, and strong signals with minimal background in Western blot applications. Only our best-performing antibodies are designated as Picoband, ensuring unmatched performance.
Application	Flow Cytometry, WB
Clonality	Polyclonal
Formulation	Each vial contains 4 mg Trehalose, 0.9 mg NaCl, 0.2 mg Na ₂ HPO ₄ .
Storage Instructions	At -20°C for one year from date of receipt. After reconstitution, at 4°C for one month. It can also be aliquotted and stored frozen at -20°C for six months. Avoid repeated freezing and thawing.
Host	Rabbit
Uniprot ID	P54920

Technical Details

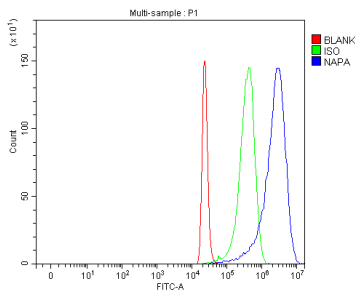
Immunogen	A synthetic peptide corresponding to a sequence at the N-terminus of human Alpha SNAP/NAPA, which shares 95.7% amino acid (aa) sequence identity with mouse and rat NAPA.
Recommended Detection Systems	Boster recommends Enhanced Chemiluminescent Kit with anti-Rabbit IgG (EK1002) for Western blot.
Cross Reactivity	No cross-reactivity with other proteins.
Isotype	Rabbit IgG

Form	Lyophilized
Concentration	Adding 0.2 ml of distilled water will yield a concentration of 500 µg/ml.
Purification	Immunogen affinity purified.
Suggested Dilutions	Western blot, 0.25-0.5 µg/ml, Human Flow Cytometry (Fixed), 1-3 µg/1x10 ⁶ cells, Human

Anti-Alpha SNAP/NAPA Antibody Picoband® (A05153-1) Images



Western blot analysis of Alpha SNAP/NAPA using anti-Alpha SNAP/NAPA antibody (A05153-1). Electrophoresis was performed on a 5-20% SDS-PAGE gel at 70V (Stacking gel) / 90V (Resolving gel) for 2-3 hours. The sample well of each lane was loaded with 30 ug of sample under reducing conditions. Lane 1: human 293T whole cell lysates, Lane 2: human MCF-7 whole cell lysates, Lane 3: human A549 whole cell lysates, Lane 4: human K562 whole cell lysates, Lane 5: human THP-1 whole cell lysates, Lane 6: human PC-3 whole cell lysates. After electrophoresis, proteins were transferred to a nitrocellulose membrane at 150 mA for 50-90 minutes. Blocked the membrane with 5% non-fat milk/TBS for 1.5 hour at RT. The membrane was incubated with rabbit anti-Alpha SNAP/NAPA antigen affinity purified polyclonal antibody (Catalog # A05153-1) at 0.5 ug/mL overnight at 4°C, then washed with TBS-0.1%Tween 3 times with 5 minutes each and probed with a goat anti-rabbit IgG-HRP secondary antibody at a dilution of 1:5000 for 1.5 hour at RT. The signal is developed using an Enhanced Chemiluminescent detection (ECL) kit (Catalog # EK1002) with Tanon 5200 system. A specific band was detected for Alpha SNAP/NAPA at approximately 33 kDa. The expected band size for Alpha SNAP/NAPA is at 33 kDa.



Flow Cytometry analysis of 293T cells using anti-Alpha SNAP/NAPA antibody (A05153-1). Overlay histogram showing 293T cells stained with A05153-1 (Blue line). The cells were fixed with 4% paraformaldehyde and blocked with 10% normal goat serum. And then incubated with rabbit anti-Alpha SNAP/NAPA Antibody (A05153-1, 1 ug/1x10⁶ cells) for 30 min at 20°C. DyLight®488 conjugated goat anti-rabbit IgG (BA1127, 5-10 ug/1x10⁶ cells) was used as secondary antibody for 30 minutes at 20°C. Isotype control antibody (Green line) was rabbit IgG (1 ug/1x10⁶) used under the same conditions. Unlabelled sample (Red line) was also used as a control.

Submit a product review to [Biocompare.com](https://www.biocompare.com)

Submit a review of this product to [Biocompare.com](https://www.biocompare.com) to receive a \$20 Amazon.com giftcard! Your reviews help your fellow scientists make the right decisions. Thank you for your contribution.



Anti-Alpha SNAP/NAPA Antibody

For Research Use Only. Not for use in diagnostic procedures.