

Anti-ASCL2/Mash2 Antibody

Catalog Number: A05155

Overview

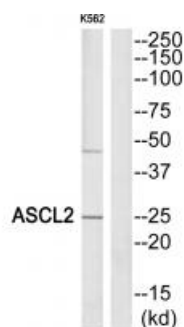
Product Name	Anti-ASCL2/Mash2 Antibody
Reactive Species	Human
Description	Boster Bio Anti-ASCL2/Mash2 Antibody catalog # A05155. Tested in WB applications. This antibody reacts with Human.
Application	WB
Clonality	Polyclonal
Formulation	Rabbit IgG in phosphate buffered saline (without Mg ²⁺ and Ca ²⁺), pH 7.4, 150mM NaCl, 0.02% sodium azide and 50% glycerol.
Storage Instructions	Store at -20°C for one year. For short term storage and frequent use, store at 4°C for up to one month. Avoid repeated freeze-thaw cycles.
Host	Rabbit
Uniprot ID	Q99929

Technical Details

Immunogen	Synthesized peptide derived from Internal of human ASCL2.
Form	Liquid
Concentration	0.5-1mg/ml, actual concentration vary by lot. Use suggested dilution ratio to decide dilution procedure.
Purification	Immunogen affinity purified
Suggested Dilutions	Dilute the sample so that the expected range of concentrations fall within the detection range of this kit. If the expected range of concentration is unknown, a pilot test should be conducted to decide the optimal dilution ratio for your samples. Some PubMed article(s) citing the expression level of this target are as follows: Boster Bio's internal QC testing used WB, 1:500-1:3000

For protocols please visit <https://www.bosterbio.com/protocol-and-troubleshooting/>

Anti-ASCL2/Mash2 Antibody (A05155) Images



Western blot analysis of extracts from K562 cells, using ASCL2 antibody A05155.

Submit a product review to [Biocompare.com](https://www.biocompare.com)

Submit a review of this product to [Biocompare.com](https://www.biocompare.com) to receive a \$20 Amazon giftcard! Your reviews help your fellow scientists make the right decisions. Thank you for your contribution.



Anti-ASCL2/Mash2 Antibody