

Anti-CSH1/Placental Lactogen Antibody

Catalog Number: A05177

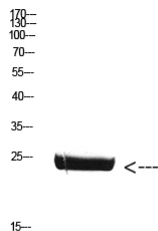
Overview

Product Name	Anti-CSH1/Placental Lactogen Antibody
Reactive Species	Human
Description	Boster Bio Anti-CSH1/Placental Lactogen Antibody catalog # A05177. Tested in WB, IHC, IF, ELISA applications. This antibody reacts with Human.
Application	ELISA, IF, IHC, WB
Clonality	Polyclonal
Formulation	PBS, pH 7.4, containing 0.02% sodium azide as Preservative and 50% Glycerol.
Storage Instructions	Store at -20°C for one year. For short term storage and frequent use, store at 4°C for up to one month. Avoid repeated freeze-thaw cycles.
Host	Rabbit
Uniprot ID	P01243

Technical Details

Immunogen	Synthetic peptide from human protein at AA range: 161-210
Isotype	IgG
Form	Liquid
Concentration	1 mg/ml
Purification	Immunogen affinity purified
Suggested Dilutions	IHC: 100-300 WB 1:500-2000 ELISA 1:10000-20000 IF 1:50-200

Anti-CSH1/Placental Lactogen Antibody (A05177) Images



Western Blot (WB) analysis of Mouse Brain cells using antibody diluted at 1:800.

Submit a product review to Biocompare.com

Submit a review of this product to Biocompare.com to receive a \$20 Amazon.com giftcard! Your reviews help your fellow scientists make the right decisions. Thank you for your contribution.



Anti-CSH1/Placental Lactogen Antibody

For Research Use Only. Not for use in diagnostic procedures.