

Anti-Importin subunit alpha-3 KPNA4 Antibody

Catalog Number: A05188

About KPNA4

Karyopherin, a cytosolic and heterodimeric protein complex consisting of alpha and beta subunits, is responsible for targeting proteins with nuclear localization signals to the nuclear pore complex by an energy requiring, Ran-dependent mechanism. The alpha subunit and imported substrate enter the nucleus and accumulate in the nucleoplasm, while the beta subunit accumulates at the NPC. Molecules containing the classical nuclear localization signal (NLS) are transported into the nucleus by alpha/beta heterodimers. KPNA3 has been shown to be important in the TNF-alpha-induced nuclear import of NF-kappaB. It is also involved in the stress-mediated nuclear stabilization of p53 and the nuclear import and replication of HIV-1 in both dividing and non-dividing cells.

Overview

Product Name	Anti-Importin subunit alpha-3 KPNA4 Antibody
Reactive Species	Human, Mouse, Rat
Description	Boster Bio Anti-Importin subunit alpha-3 KPNA4 Antibody (Catalog # A05188). Tested in ELISA, WB, ICC, IF applications. This antibody reacts with Human, Mouse, Rat.
Application	ELISA, IF, ICC, WB
Clonality	Polyclonal
Formulation	KPNA4 Antibody is supplied in PBS containing 0.02% sodium azide.
Storage Instructions	KPNA4 antibody can be stored at 4°C for three months and -20°C, stable for up to one year. Avoid repeated freeze-thaw cycles. Antibodies should not be exposed to prolonged high temperatures.
Host	Rabbit
Uniprot ID	O00629

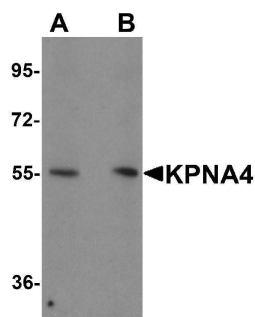
Technical Details

Immunogen	KPNA4 antibody was raised against a 15 amino acid synthetic peptide near the amino terminus of human KPNA4. The immunogen is located within amino acids 30 - 80 of KPNA4.
Predicted Reactive Species	Bovine
Isotype	IgG
Form	Liquid
Concentration	1 mg/mL
Purification	KPNA4 Antibody is affinity chromatography purified via peptide column.

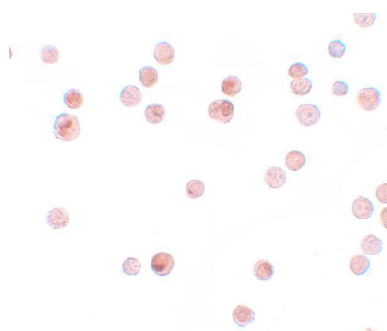
Suggested Dilutions

KPNA4 antibody can be used for detection of KPNA4 by Western blot at 1 ug/mL. Antibody can also be used for immunocytochemistry starting at 2.5 ug/mL. For immunofluorescence start at 20 ug/mL. Antibody validated: Western Blot in human samples; Immunocytochemistry in human samples and Immunofluorescence in human samples. All other applications and species not yet tested. Optimal dilutions for each application should be determined by the researcher.

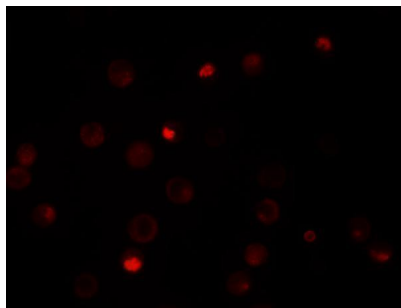
Anti-Importin subunit alpha-3 KPNA4 Antibody (A05188) Images



Western blot analysis of KPNA4 in HeLa cell lysate with KPNA4 antibody at (A) 0.5 and (B) 1 ug/mL.



Immunocytochemistry of KPNA4 in HeLa cells with KPNA4 antibody at 2.5 ug/mL.



Immunofluorescence of KPNA4 in HeLa cells with KPNA4 antibody at 20 ug/mL.

Submit a product review to Biocompare.com

Submit a review of this product to Biocompare.com to receive a \$20 Amazon.com giftcard! Your reviews help your fellow scientists make the right decisions. Thank you for your contribution.



Anti-Importin subunit alpha-3 KPNA4 Antibody

For Research Use Only. Not for use in diagnostic procedures.