

## Anti-JMJD1C Antibody

Catalog Number: A05189

### About JMJD1C

The jumonji domain containing 1C protein (JMJD1C) was initially discovered in silico, and later suggested to be a candidate gene for autism. Like the related proteins JMJD1A and JMJD1B, JMJD1C is a histone H3K9 demethylase implicated in the nuclear hormone receptor-based transcriptional regulation. JMJD1C mRNA is highly expressed in undifferentiated embryonic stem (ES) cells as well as pancreatic islet, diffuse-type gastric cancer, and other tissues and tumors. The JMJD1C gene promoter contains bHLH-, AP-1-, and POU5F1-binding sites, and as preferential expression of POU5F1 has been reported in ES cells, pancreatic islet, and diffuse-type gastric cancer, it has been suggested that POU5F1-mediated expression of JMJD1C reactivates previously silenced genes in ES cells and diffuse-type gastric cancer. At least three isoforms of JMJD1C are known to exist.

### Overview

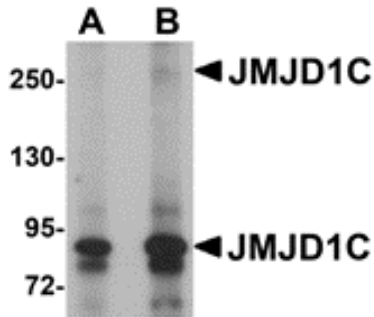
Product Name	Anti-JMJD1C Antibody
Reactive Species	Human, Mouse, Rat
Description	Boster Bio Anti-JMJD1C Antibody (Catalog # A05189). Tested in ELISA, WB, IHC-P, IF applications. This antibody reacts with Human, Mouse, Rat.
Application	ELISA, IF, IHC-P, WB
Clonality	Polyclonal
Formulation	JMJD1C Antibody is supplied in PBS containing 0.02% sodium azide.
Storage Instructions	JMJD1C antibody can be stored at 4°C for three months and -20°C, stable for up to one year. Avoid repeated freeze-thaw cycles. Antibodies should not be exposed to prolonged high temperatures.
Host	Rabbit
Uniprot ID	Q15652

### Technical Details

Immunogen	JMJD1C antibody was raised against a 20 amino acid synthetic peptide from near the amino terminus of human JMJD1C. The immunogen is located within amino acids 380 - 430 of JMJD1C.
Predicted Reactive Species	Bovine
Cross Reactivity	This antibody will not cross-react with JMJD1A or JMJD1B.
Isotype	IgG
Form	Liquid
Concentration	1 mg/mL

Purification	JMJD1C Antibody is affinity chromatography purified via peptide column.
Suggested Dilutions	JMJD1C antibody can be used for detection of JMJD1C by Western blot at 1 - 2 ug/mL. Antibody can also be used for immunohistochemistry starting at 2.5 ug/mL. For immunofluorescence start at 20 ug/mL. Antibody validated: Western Blot in human samples; Immunohistochemistry in rat samples and Immunofluorescence in rat samples. All other applications and species not yet tested. Optimal dilutions for each application should be determined by the researcher.

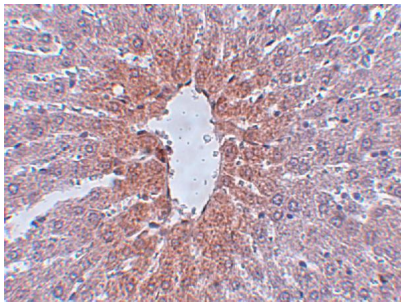
## Anti-JMJD1C Antibody (A05189) Images



Western blot analysis of JMJD1C in human liver tissue lysate with JMJD1C antibody at (A) 1 and (B) 2 ug/mL.



Immunofluorescence of JMJD1C in rat liver tissue with JMJD1C antibody at 20 ug/mL.



Immunohistochemistry of JMJD1C in rat liver tissue with JMJD1C antibody at 2.5 ug/mL.

### Submit a product review to [Biocompare.com](https://www.biocompare.com)

Submit a review of this product to [Biocompare.com](https://www.biocompare.com) to receive a \$20 Amazon.com giftcard! Your reviews help your fellow scientists make the right decisions. Thank you for your contribution.



Anti-JMJD1C Antibody

For Research Use Only. Not for use in diagnostic procedures.