

Anti-SUMO3 Antibody

Catalog Number: A05193

About SUMO3

Small ubiquitin-like modifiers (SUMOs) are a family of small, related proteins (Sumo-1/2/3/4) that can be enzymatically attached to a target protein by a post-translational modification process termed sumoylation, which is a major regulator of protein function in cellular processes such as nuclear transport, transcriptional regulation, apoptosis and protein stability. All SUMO proteins localize to the nucleus and are covalently conjugated, affecting protein structure, function and interactions. SUMO2 and 3 are 96% identical and are more mobile within nucleus relative to SUMO1. Specific functional differences between SUMO1 and SUMO2 and 3 remain to be identified.

Overview

Product Name	Anti-SUMO3 Antibody
Reactive Species	Human, Mouse, Rat
Description	Boster Bio Anti-SUMO3 Antibody (Catalog # A05193). Tested in ELISA, WB, IHC-P, IF applications. This antibody reacts with Human, Mouse, Rat.
Application	ELISA, IF, IHC-P, WB
Clonality	Polyclonal
Formulation	SUMO3 Antibody is supplied in PBS containing 0.02% sodium azide.
Storage Instructions	SUMO3 antibody can be stored at 4°C for three months and -20°C, stable for up to one year. Avoid repeated freeze-thaw cycles. Antibodies should not be exposed to prolonged high temperatures.
Host	Rabbit
Uniprot ID	P55854

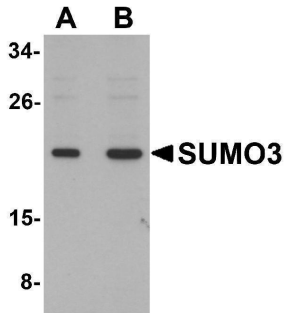
Technical Details

Immunogen	SUMO3 antibody was raised against a 13 amino acid synthetic peptide near the carboxy terminus of human SUMO3. The immunogen is located within the last 50 amino acids of SUMO3.
Predicted Reactive Species	Bovine
Isotype	IgG
Form	Liquid
Concentration	1 mg/mL
Purification	SUMO3 Antibody is affinity chromatography purified via peptide column.
Suggested Dilutions	SUMO3 antibody can be used for detection of SUMO3 by Western blot at 1 - 2 ug/mL. Antibody can also be used for immunohistochemistry starting at 5 ug/mL. For immunofluorescence start at 20

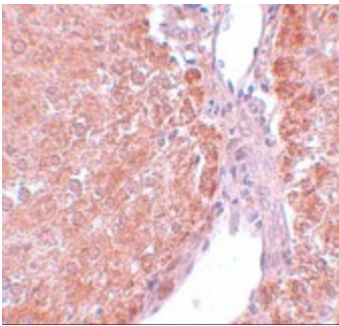
ug/mL.

Antibody validated: Western Blot in mouse samples; Immunohistochemistry in rat samples and Immunofluorescence in mouse samples. All other applications and species not yet tested. Optimal dilutions for each application should be determined by the researcher.

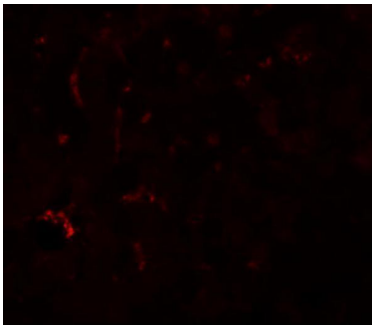
Anti-SUMO3 Antibody (A05193) Images



Western blot analysis of SUMO3 in mouse liver tissue lysate with SUMO3 antibody at (A) and (B) 2 ug/mL.



Immunohistochemistry of SUMO2/3 in rat liver tissue with SUMO2/3 antibody at 5 ug/mL.



Immunofluorescence of SUMO3 in mouse liver tissue with SUMO3 antibody at 20 ug/mL.

Submit a product review to [Biocompare.com](https://www.biocompare.com)

Submit a review of this product to [Biocompare.com](https://www.biocompare.com) to receive a \$20 Amazon.com giftcard! Your reviews help your fellow scientists make the right decisions. Thank you for your contribution.



Anti-SUMO3 Antibody

For Research Use Only. Not for use in diagnostic procedures.