

Anti-RGS10 Antibody

Catalog Number: A05197

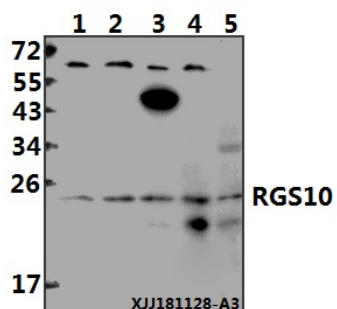
Overview

Product Name	Anti-RGS10 Antibody
Reactive Species	Human
Description	Boster Bio Anti-RGS10 Antibody catalog # A05197. Tested in WB,IHC applications. This antibody reacts with Human.
Application	IHC, WB
Clonality	Polyclonal
Formulation	Rabbit IgG, 1mg/ml in PBS with 0.02% sodium azide, 50% glycerol, pH7.2
Storage Instructions	Store at -20°C for one year. For short term storage and frequent use, store at 4°C for up to one month. Avoid repeated freeze-thaw cycles.
Host	Rabbit
Uniprot ID	O43665

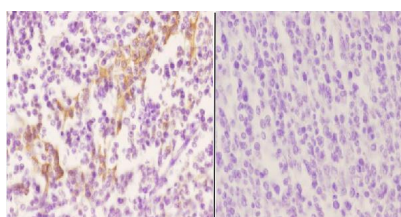
Technical Details

Immunogen	Synthetic peptide, corresponding to amino acids 357-402 of Human RGS10.
Isotype	IgG
Form	Liquid
Concentration	1 mg/ml
Purification	The antibody was affinity-purified from rabbit antiserum by affinity-chromatography using epitope-specific immunogen and the purity is > 95% (by SDS-PAGE).
Suggested Dilutions	WB: 1:500-1:1000 IHC: 1:50-1:200

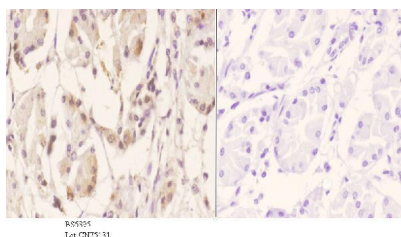
Anti-RGS10 Antibody (A05197) Images



Western blot (WB) analysis of RGS10 polyclonal antibody at 1:500 dilution Lane1:Jurkat whole cell lysate(40µg) Lane2:Myla2059 whole cell lysate(40µg) Lane3:HUT78 whole cell lysate(40µg) Lane4:K562 whole cell lysate(40µg) Lane5:SGC7901 whole cell lysate(40µg)



Immunohistochemistry (IHC) analyzes of RGS10 pAb in paraffin-embedded human tonsil carcinoma tissue at 1:50. showing cytoplasmic and nucleus staining. Negative control (the right) Using PBS instead of primary antibody, secondary antibody is Goat Anti-Rabbit IgG-biotin followed by avidin-peroxidase.



Immunohistochemistry (IHC) analyzes of RGS10 pAb in paraffin-embedded human stomach carcinoma tissue at 1:50. showing cytoplasmic and nucleus staining. Negative control (the right) Using PBS instead of primary antibody, secondary antibody is Goat Anti-Rabbit IgG-biotin followed by avidin-peroxidase.

Submit a product review to Biocompare.com

Submit a review of this product to Biocompare.com to receive a \$20 Amazon.com giftcard! Your reviews help your fellow scientists make the right decisions. Thank you for your contribution.



Anti-RGS10 Antibody

For Research Use Only. Not for use in diagnostic procedures.