

## Anti-CTHRC1 Antibody

Catalog Number: A05203

### About CTHRC1

The Collagen triple helix repeat-containing protein (CTHRC1) is a glycosylated, secreted protein that is transiently expressed in the arterial wall in response to injury where it is thought to contribute to vascular remodeling by inhibiting collagen expression and deposition and promoting cell migration (1). CTHRC1 is highly expressed multiple human cancers, including pancreatic cancer where it plays a significant role in the progression and metastasis of the disease by regulating migration and adhesion of tumors cells (2). CTHRC1 overexpression can also be used as an independent prognostic marker in gastric cancer (3). Mutations at this locus have been associated with Barrett esophagus and esophageal adenocarcinoma (4).

### Overview

Product Name	Anti-CTHRC1 Antibody
Reactive Species	Human, Mouse, Rat
Description	Boster Bio Anti-CTHRC1 Antibody (Catalog # A05203). Tested in ELISA, WB, IHC-P, IF applications. This antibody reacts with Human, Mouse, Rat.
Application	ELISA, IF, IHC-P, WB
Clonality	Polyclonal
Formulation	CTHRC1 antibody is supplied in PBS containing 0.02% sodium azide.
Storage Instructions	CTHRC1 antibody can be stored at 4°C for three months and -20°C, stable for up to one year.
Host	Rabbit
Uniprot ID	Q96CG8

### Technical Details

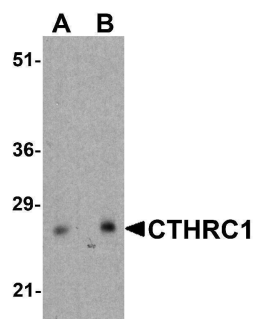
Immunogen	CTHRC1 antibody was raised against a 19 amino acid peptide near the amino terminus of human CTHRC1. The immunogen is located within the first 50 amino acids of CTHRC1.
Predicted Reactive Species	Bovine
Cross Reactivity	CTHRC1 antibody is human, mouse and rat reactive. At least two isoforms of CTHRC1 are known to exist; this antibody will detect only the larger isoform.
Isotype	IgG
Form	Liquid
Concentration	1 mg/mL
Purification	CTHRC1 antibody is affinity chromatography purified via peptide column.

Suggested Dilutions

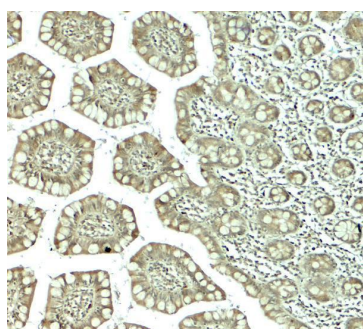
CTHRC1 antibody can be used for detection of CTHRC1 by Western blot at 1 - 2 ug/mL. Antibody can also be used for immunohistochemistry starting at 5 ug/mL. For immunofluorescence start at 20 ug/mL.

Antibody validated: Western Blot in rat samples; Immunohistochemistry in human samples and Immunofluorescence in human samples. All other applications and species not yet tested. Optimal dilutions for each application should be determined by the researcher.

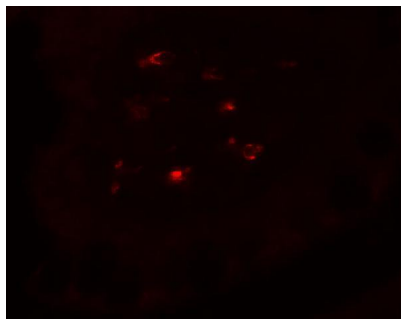
## Anti-CTHRC1 Antibody (A05203) Images



Western blot analysis of CTHRC1 in rat small intestine tissue lysate with CTHRC1 antibody at (A) 1 and (B) 2 ug/ml.



Immunohistochemistry of CTHRC1 in human small intestine tissue with CTHRC1 antibody at 5 ug/mL.



Immunofluorescence of CTHRC1 in human small intestine tissue with CTHRC1 antibody at 20 ug/mL.

### Submit a product review to [Biocompare.com](https://www.biocompare.com)

Submit a review of this product to [Biocompare.com](https://www.biocompare.com) to receive a \$20 Amazon.com giftcard! Your reviews help your fellow scientists make the right decisions. Thank you for your contribution.



Anti-CTHRC1 Antibody

For Research Use Only. Not for use in diagnostic procedures.