

## Anti-CLK2 Antibody

Catalog Number: A05206

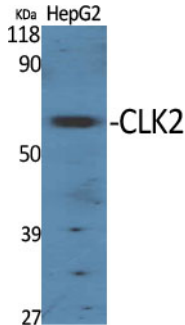
### Overview

|                      |  |
|----------------------|--|
| Product Name         | Anti-CLK2 Antibody   |
| Reactive Species     | Human, Mouse, Rat  |
| Description          | Boster Bio Anti-CLK2 Antibody catalog # A05206. Tested in WB, IHC, IF, ELISA applications. This antibody reacts with Human, Mouse, Rat.  |
| Application          | ELISA, IF, IHC, WB   |
| Clonality            | Polyclonal   |
| Formulation          | Liquid in PBS containing 50% glycerol, 0.5% stabilizing protein and 0.02% sodium azide.<br>*This antibody is supplied in a stabilized formulation.<br>Compatibility with conjugation reactions depends on the chemistry of the conjugation method used. For conjugation methods that are not compatible with the stabilizing components present in this formulation, a carrier-free antibody format is required. |
| Storage Instructions | Store at -20°C for one year. For short term storage and frequent use, store at 4°C for up to one month. Avoid repeated freeze-thaw cycles.   |
| Host                 | Rabbit   |
| Uniprot ID           | P49760   |

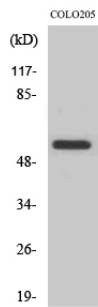
### Technical Details

|                     |   |
|---------------------|---|
| Immunogen           | The antiserum was produced against synthesized peptide derived from human CLK2. AA range:1-50 |
| Isotype             | IgG   |
| Form                | Liquid  |
| Concentration       | 1 mg/ml   |
| Purification        | Immunogen affinity purified   |
| Suggested Dilutions | WB 1:500-1:2000<br>IHC 1:100-1:300<br>ELISA 1:20000<br>IF 1:50-200                            |

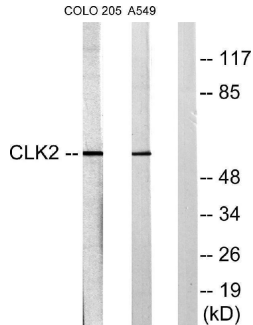
## Anti-CLK2 Antibody (A05206) Images



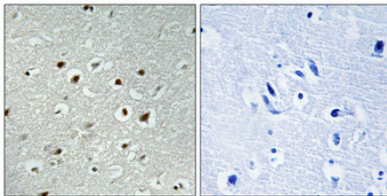
Western Blot analysis of various cells using CLK2 Polyclonal Antibody cells nucleus extracted by Minute TM Cytoplasmic and Nuclear Fractionation kit .



Western Blot analysis of A549 cells using CLK2 Polyclonal Antibody cells nucleus extracted by Minute TM Cytoplasmic and Nuclear Fractionation kit .



Western blot analysis of lysates from COLO205 and A549 cells, using CLK2 Antibody. The lane on the right is blocked with the synthesized peptide.



Immunohistochemical analysis of paraffin-embedded Human brain. Antibody was diluted at 1:100 (4° overnight). High-pressure and temperature Tris-EDTA, pH8.0 was used for antigen retrieval. Negative contrl (right) obtained from antibody was pre-absorbed by immunogen peptide.

Submit a product review to [Biocompare.com](https://www.biocompare.com)

Submit a review of this product to [Biocompare.com](https://www.biocompare.com) to receive a \$20 Amazon.com giftcard! Your reviews help your fellow scientists make the right decisions. Thank you for your contribution.



Anti-CLK2 Antibody

For Research Use Only. Not for use in diagnostic procedures.